



W. MAX[®]

LED
COMMERCIAL LIGHTING
SYSTEM SOLUTIONS
PROVIDER



Maximize the Value
of Lighting



VMAX will provide timely feedback.

4 operation centers at home and abroad.
10 production bases with research & development center.
60 professional engineers and 3900 workers.
VMAX is providing more than 400 customers from 58 countries with distinctive LED commercial items.

VMAX Operation Centers are established all over the world. We can provide you with convenient and quality services anytime.



Lighting terminology

1. Luminous flux

A measure of the radiant power of light emitted from a source without regard for the direction in which it is emitted. It is measured in lumen. Unit: lumen [LM] For example, a dinner candle provides about 12 lumen. A 60-Watt Soft White incandescent lamp provides 600 lumen.

2. Light intensity

Generally speaking, the light is launched into a different direction with different intensity. Visible light launch the emission intensity in a particular direction angle is called intensity.

3. Intensity of illumination

Illumination is the scale factor of luminous flux and irradiation area. 1 lx is the unit of luminous flux of 1 LM are ev-enly distributed throughout the area of luminance in the plane.

4. Color temperature

Color temperature is defined as absolute black body, light radiation in the visible region, and when exactly the same absolute black body radiation, black body temperature is called the color temperature of the light at this time. For example, incandescent light is warm white, the color temperature is 2700K, daylight fluorescent lamp color temperature is 6000K.

5. Color rendering index

Degree of color rendering of light source for objects known as color rendering. Often called "color rendering index" (Ra). Natural outdoor light has a CRI of 100.

General Led type and Structure

Light principle for LED is similar, and LED types can be classified according to different encapsulation style:

1) In-line LED

Put the led chip into the reflection cup on the leading frame, then sealed with resin which is mixed with the fluorescent powder, and finally solidify to shape.

2) SMD

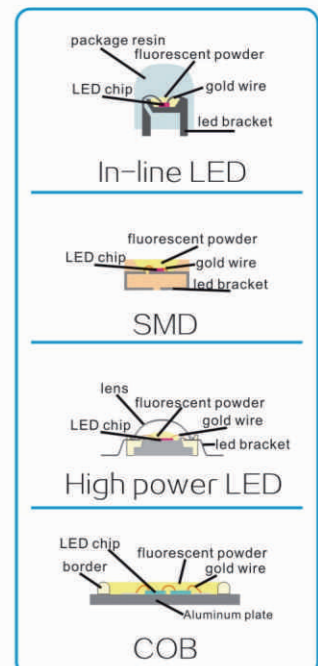
Put the led chip onto the module in the reflection cup with copper and resin then sealed in cured resin or silica gel resin which is mixed fluorescent powder.

3) High power LED

Put the large size led chip onto the module in the reflection cup with copper and resin, then sealed in cured resin or silica gel resin which is mixed fluorescent powder and put a cover to protect it.

4) COB

put led chips baked and fixed on the laminates, then covered with fluorescent powder on the chip surface which has connected pole, and baked into a certain shape and finally solidify to a module.



VMAX will provide timely feedback.



- LED Panel Light 02-11
- LED Down Light 12-26
- LED Spot Light 27-43
- LED Ceiling Light 44-51
- LED Outdoor Landscape Light 52-65
- LED Emergency Light 66-71
- LED Wall lamp 72-79
- LED Strip Light and spare parts 80-88
- Lighting LED Source Series 89-104
- LED Track Light 105-113
- LED High bay 114-118



www.vmax.ae

LED Panel Light



Maximize the Value of Lighting



V-152207

8W

Power: SMD 8W
 Input Voltage: AC220-240V 50/60Hz
 Luminous Flux: $\geq 400\text{lm}$
 CRI: ≥ 70
 Beam Angle: 120°
 Color Temperature: 6500K+3000K+4000K
 Life Span: 30000H
 Material: Dia-Cast Aluminium
 Product Size: $\Phi 125 \times 30\text{mm}$
 Hole Size: $\Phi 110\text{mm}$



V-152212

12W

Power: SMD 12W
 Input Voltage: AC220-240V 50/60Hz
 Luminous Flux: $\geq 800\text{lm}$
 CRI: ≥ 70
 Beam Angle: 120°
 Color Temperature: 6500K+3000K+4000K
 Life Span: 30000H
 Material: Dia-Cast Aluminium
 Product Size: $\Phi 150 \times 30\text{mm}$
 Hole Size: $\Phi 135\text{mm}$

V-152215

15W

Power: SMD 15W
 Input Voltage: AC220-240V 50/60Hz
 Luminous Flux: $\geq 1200\text{lm}$
 CRI: ≥ 70
 Beam Angle: 120°
 Color Temperature: 6500K+3000K+4000K
 Life Span: 30000H
 Material: Dia-Cast Aluminium
 Product Size: $\Phi 170 \times 30\text{mm}$
 Hole Size: $\Phi 160\text{mm}$

V-152218

18W

Power: SMD 18W
 Input Voltage: AC220-240V 50/60Hz
 Luminous Flux: $\geq 1520\text{lm}$
 CRI: ≥ 70
 Beam Angle: 120°
 Color Temperature: 6500K+3000K+4000K
 Life Span: 30000H
 Material: Dia-Cast Aluminium
 Product Size: $\Phi 204 \times 30\text{mm}$
 Hole Size: $\Phi 185\text{mm}$

V-152224

24W

Power: SMD 24W
 Input Voltage: AC220-240V 50/60Hz
 Luminous Flux: $\geq 1600\text{lm}$
 CRI: ≥ 70
 Beam Angle: 120°
 Color Temperature: 6500K+3000K+4000K
 Life Span: 30000H
 Material: Dia-Cast Aluminium
 Product Size: $\Phi 230 \times 30\text{mm}$
 Hole Size: $\Phi 210\text{mm}$



MD-PLQ1607R/S

7W

Power: SMD 5+2W
 Input Voltage: AC220-240V 50/60Hz
 Luminous Flux: $\geq 420\text{lm}$
 CRI: ≥ 80
 Beam Angle: 120°
 Color Temperature: 6500K/4000K/3000K
 Ring Color: 6500K/4000K/3000K/Red/
 Green/Blue/Golden Yellow
 Surface Treatment: WH/SN/CH/HG
 Working Temperature: -10-45° C
 Life Span: 25000H
 Material: Dia-Cast Aluminium
 Product Size: 105x33mm
 Hole Size: 85mm



MD-PLQ1612R/S

12W

Power: SMD 9+3W
 Input Voltage: AC220-240V 50/60Hz
 Luminous Flux: $\geq 720\text{lm}$
 CRI: ≥ 80
 Beam Angle: 120°
 Color Temperature: 6500K/4000K/3000K
 Ring Color: 6500K/4000K/3000K/Red/
 Green/Blue/Golden Yellow
 Surface Treatment: WH/SN/CH/HG
 Working Temperature: -10-45° C
 Life Span: 25000H
 Material: Dia-Cast Aluminium
 Product Size: 144x33mm
 Hole Size: 118mm

MD-PLQ1618R/S

18W

Power: SMD 15+3W
 Input Voltage: AC220-240V 50/60Hz
 Luminous Flux: $\geq 1100\text{lm}$
 CRI: ≥ 80
 Beam Angle: 120°
 Color Temperature: 6500K/4000K/3000K
 Ring Color: 6500K/4000K/3000K/Red/
 Green/Blue/Golden Yellow
 Surface Treatment: WH/SN/CH/HG
 Working Temperature: -10-45° C
 Life Span: 25000H
 Material: Dia-Cast Aluminium
 Product Size: 190x33mm
 Hole Size: 170mm





V-15204A
V-15214A

8W

Power: SMD 7+1W
Input Voltage: AC220-240V 50/60Hz
Luminous Flux: ≥380lm
CRI: ≥70
Beam Angle: 120°
Color Temperature: 6500K/4000K/3000K
Ring Color: 6500K/4000K/3000K
Golden Yellow / Blue / Red
Life Span: 30000H
Material: Dia-Cast Aluminium
Product Size: 130x35mm
Hole Size: 95mm



V-15206A
V-15216A

12W

Power: SMD 10+2W
Input Voltage: AC220-240V 50/60Hz
Luminous Flux: ≥493lm
CRI: ≥70
Beam Angle: 120°
Color Temperature: 6500K/4000K/3000K
Ring Color: 6500K/4000K/3000K
Golden Yellow / Blue / Red
Life Span: 30000H
Material: Dia-Cast Aluminium
Product Size: 155x27mm
Hole Size: 110mm

V-15208A
V-15218A

18W

Power: SMD 15+3W
Input Voltage: AC220-240V 50/60Hz
Luminous Flux: ≥942lm
CRI: ≥70
Beam Angle: 120°
Color Temperature: 6500K/4000K/3000K
Ring Color: 6500K/4000K/3000K
Golden Yellow / Blue / Red
Life Span: 30000H
Material: Dia-Cast Aluminium
Product Size: 187x27mm
Hole Size: 140mm



MD-0108A
MD-0208A

8W

Power: SMD 8W
Input Voltage: AC220-240V 50/60Hz
Luminous Flux: ≥600lm
CRI: ≥70
Beam Angle: 120°
Color Temperature: 6500K+3000K+4000K
Life Span: 30000H
Material: Dia-Cast Aluminium
Product Size: 108x35mm
Hole Size: 75mm

MD-0112A
MD-0212A

12W

Power: SMD 12W
Input Voltage: AC220-240V 50/60Hz
Luminous Flux: ≥900lm
CRI: ≥70
Beam Angle: 120°
Color Temperature: 6500K+3000K+4000K
Life Span: 30000H
Material: Dia-Cast Aluminium
Product Size: 160x37mm
Hole Size: 125mm

MD-0118A
MD-0218A

18W

Power: SMD 18W
Input Voltage: AC220-240V 50/60Hz
Luminous Flux: ≥1500lm
CRI: ≥70
Beam Angle: 120°
Color Temperature: 6500K+3000K+4000K
Life Span: 30000H
Material: Dia-Cast Aluminium
Product Size: 198x37mm
Hole Size: 167mm

MD-0130A
MD-0230A

30W

Power: SMD 30W
Input Voltage: AC220-240V 50/60Hz
Luminous Flux: ≥2200lm
CRI: ≥70
Beam Angle: 120°
Color Temperature: 6500K+3000K+4000K
Life Span: 30000H
Material: Dia-Cast Aluminium
Product Size: 263x42mm
Hole Size: 220mm



3/7/10/15/20/30 W NEW LED

LED NEW 3/7/10/15/20/30 W

MD-15191/15192

3W

Power: SMD 3W
 Input Voltage: AC220-240V 50/60Hz
 Luminous Flux: ≥240lm
 CRi: ≥70
 Beam Angle: 120°
 Color Temperature: 6500K/4000K/3000K
 Surface Treatment: WH/CH/HG/SN
 Life Span: 30000H
 Material: Dia-Cast Aluminium
 Product Size: 85x25mm
 Hole Size: 75mm



MD-151910/151911

10W

Power: SMD 10W
 Input Voltage: AC220-240V 50/60Hz
 Luminous Flux: ≥720lm
 CRi: ≥70
 Beam Angle: 120°
 Color Temperature: 6500K/4000K/3000K
 Surface Treatment: WH/CH/HG/SN
 Life Span: 30000H
 Material: Dia-Cast Aluminium
 Product Size: 145x25mm
 Hole Size: 135mm

MD-15193/15195

15W

Power: SMD 15W
 Input Voltage: AC220-240V 50/60Hz
 Luminous Flux: ≥960lm
 CRi: ≥70
 Beam Angle: 120°
 Color Temperature: 6500K/4000K/3000K
 Surface Treatment: WH/CH/HG/SN
 Life Span: 30000H
 Material: Dia-Cast Aluminium
 Product Size: 170x25mm
 Hole Size: 160mm

MD-15198/15199

7W

Power: SMD 7W
 Input Voltage: AC220-240V 50/60Hz
 Luminous Flux: ≥420lm
 CRi: ≥70
 Beam Angle: 120°
 Color Temperature: 6500K/4000K/3000K
 Surface Treatment: WH/CH/HG/SN
 Life Span: 30000H
 Material: Dia-Cast Aluminium
 Product Size: 120x25mm
 Hole Size: 110mm



MD-15194/15196

20W

Power: SMD 20W
 Input Voltage: AC220-240V 50/60Hz
 Luminous Flux: ≥1400lm
 CRi: ≥70
 Beam Angle: 120°
 Color Temperature: 6500K/4000K/3000K
 Surface Treatment: WH/CH/HG/SN
 Life Span: 30000H
 Material: Dia-Cast Aluminium
 Product Size: 225x25mm
 Hole Size: 210mm

MD-15197/151912

30W

Power: SMD 30W
 Input Voltage: AC220-240V 50/60Hz
 Luminous Flux: ≥1800lm
 CRi: ≥70
 Beam Angle: 120°
 Color Temperature: 6500K/4000K/3000K
 Surface Treatment: WH/CH/HG/SN
 Life Span: 30000H
 Material: Dia-Cast Aluminium
 Product Size: 300x25mm
 Hole Size: 285mm



7/15/20/30 W NEW LED



MD-15198-MZ
MD-15199-MZ 7W

Power: SMD 7W
Input Voltage: AC220-240V 50/60Hz
Luminous Flux: ≥420lm
CRI: ≥70
Beam Angle: 120°
Color Temperature: 6500K/4000K/3000K
Life Span: 30000H
Material: Dia-Cast Aluminium
Product Size: 120x36mm

MD-15194-MZ
MD-15196-MZ 20W

Power: SMD 20W
Input Voltage: AC220-240V 50/60Hz
Luminous Flux: ≥1400lm
CRI: ≥70
Beam Angle: 120°
Color Temperature: 6500K/4000K/3000K
Life Span: 30000H
Material: Dia-Cast Aluminium
Product Size: 225x36mm

MD-15193-MZ
MD-15195-MZ 15W

Power: SMD 15W
Input Voltage: AC220-240V 50/60Hz
Luminous Flux: ≥960lm
CRI: ≥70
Beam Angle: 120°
Color Temperature: 6500K/4000K/3000K
Life Span: 30000H
Material: Dia-Cast Aluminium
Product Size: 170x36mm

MD-15197-MZ
MD-151912-MZ 30W

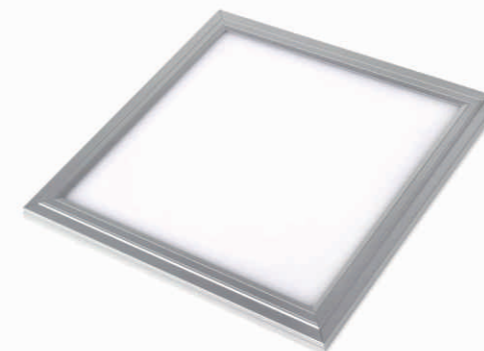
Power: SMD 30W
Input Voltage: AC220-240V 50/60Hz
Luminous Flux: ≥1800lm
CRI: ≥70
Beam Angle: 120°
Color Temperature: 6500K/4000K/3000K
Life Span: 30000H
Material: Dia-Cast Aluminium
Product Size: 300x36mm

LED NEW 15/40 W



V-1230120 40W

Power: SMD 40W
Input Voltage: AC220-240V 50/60Hz
Luminous Flux: ≥3400lm
CRI: ≥70
Beam Angle: 120°
Color Temperature: 6500K/4000K/3000K
Life Span: 30000H
Material: Dia-Cast Aluminium
Product Size: 1195x595x13mm



V-126060 40W

Power: SMD 40W
Input Voltage: AC220-240V 50/60Hz
Luminous Flux: ≥3400lm
CRI: ≥70
Beam Angle: 120°
Color Temperature: 6500K/4000K/3000K
Life Span: 30000H
Material: Dia-Cast Aluminium
Product Size: 595x595x13mm

V-123030 15W

Power: SMD 15W
Input Voltage: AC220-240V 50/60Hz
Luminous Flux: ≥1300lm
CRI: ≥70
Beam Angle: 120°
Color Temperature: 6500K/4000K/3000K
Life Span: 30000H
Material: Dia-Cast Aluminium
Product Size: 269x269x13mm





MD-126060



Power: SMD 40W
 Input Voltage: AC220-240V 50/60Hz
 Luminous Flux: $\geq 3000\text{lm}$
 CRI: ≥ 70
 Beam Angle: 120°
 Color Temperature: 6500K/4000K/3000K
 Life Span: 30000H
 Material: Dia-Cast Aluminium
 Product Size: 595x595x13mm

M-126060-40W

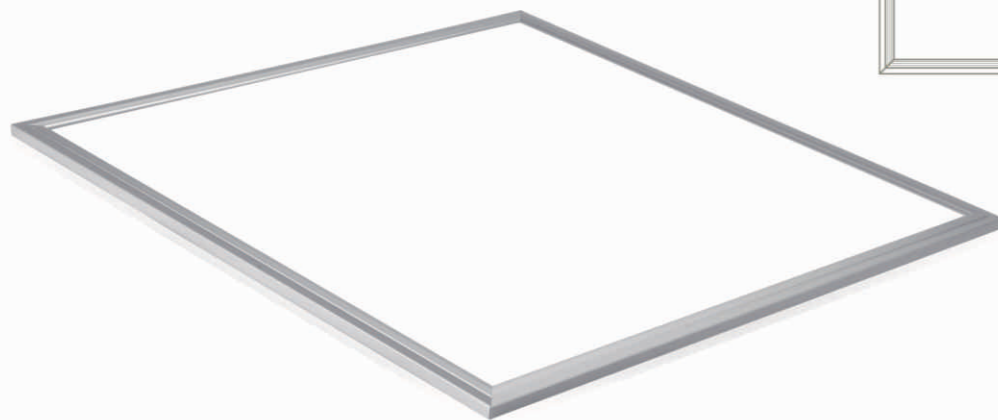


Power: SMD 40W
 Input Voltage: AC220-240V 50/60Hz
 Luminous Flux: $\geq 3000\text{lm}$
 CRI: ≥ 70
 Beam Angle: 120°
 Color Temperature: 6500K/4000K/3000K
 Life Span: 30000H
 Material: Dia-Cast Aluminium
 Product Size: 595x595x13mm
 Hole Size: 560mm

M-12606-60W



Power: SMD 60W
 Input Voltage: AC220-240V 50/60Hz
 Luminous Flux: $\geq 5000\text{lm}$
 CRI: ≥ 70
 Beam Angle: 120°
 Color Temperature: 6500K/4000K/3000K
 Life Span: 30000H
 Material: Dia-Cast Aluminium
 Product Size: 595x595x13mm
 Hole Size: 560mm



LED Down Light



Maximize the Value of Lighting

12/15/20/30/40W NEW LED



V-3812R/S 12W

Power: COB 12W
 Input Voltage: AC220-240V 50/60Hz
 Luminous Flux: ≥630lm
 CRI: ≥80
 Beam Angle: 24° / 40° / 60°
 Color Temperature: 6500K/4000K/3000K
 Surface Treatment: WH/SN/CH/HG
 Working Temperature: -10-45° C
 Life Span: 30000H
 Material: Dia-Cast Aluminium+Glass
 Product Size: 110x80mm
 Hole Size: Φ95mm

V-3820R/S 20W

Power: COB 20W
 Input Voltage: AC220-240V 50/60Hz
 Luminous Flux: ≥1530lm
 CRI: ≥80
 Beam Angle: 40° / 60°
 Color Temperature: 6500K/4000K/3000K
 Surface Treatment: WH/SN/CH/HG
 Working Temperature: -10-45° C
 Life Span: 30000H
 Material: Dia-Cast Aluminium+Glass
 Product Size: 160x102mm
 Hole Size: Φ145mm



V-3815R/S 15W

Power: COB 15W
 Input Voltage: AC220-240V 50/60Hz
 Luminous Flux: ≥800lm
 CRI: ≥80
 Beam Angle: 24° / 40° / 60°
 Color Temperature: 6500K/4000K/3000K
 Surface Treatment: WH/SN/CH/HG
 Working Temperature: -10-45° C
 Life Span: 30000H
 Material: Dia-Cast Aluminium+Glass
 Product Size: 115x88mm
 Hole Size: Φ100mm



LED NEW 12/15/20/30/40W

V-3830R/S 30W

Power: COB 30W
 Input Voltage: AC220-240V 50/60Hz
 Luminous Flux: ≥1920lm
 CRI: ≥80
 Beam Angle: 40° / 60°
 Color Temperature: 6500K/4000K/3000K
 Surface Treatment: WH/SN/CH/HG
 Working Temperature: -10-45° C
 Life Span: 30000H
 Material: Dia-Cast Aluminium+Glass
 Product Size: 195x112mm
 Hole Size: Φ180mm



V-3840R/S 40W

Power: COB 40W
 Input Voltage: AC220-240V 50/60Hz
 Luminous Flux: ≥3000lm
 CRI: ≥80
 Beam Angle: 40° / 60°
 Color Temperature: 6500K/4000K/3000K
 Surface Treatment: WH/SN/CH/HG
 Working Temperature: -10-45° C
 Life Span: 30000H
 Material: Dia-Cast Aluminium+Glass
 Product Size: 230x110mm
 Hole Size: Φ215mm





LED chip and driver are together, which is replaceable

V-DLQ1108R/S

8W

Power: COB 8W
Input Voltage: AC220-240V 50/60Hz
Luminous Flux: ≥680lm
CRI: ≥80
Beam Angle: 38°
Color Temperature: 6500K/4000K/3000K
Working Temperature: -10~45° C
Life Span: 30000H
Material: Dia-Cast Aluminium
Product Size: 116x81mm
Hole Size: Φ100mm

V-DLQ1125R/S

25W

Power: COB 25W
Input Voltage: AC220-240V 50/60Hz
Luminous Flux: ≥2200lm
CRI: ≥80
Beam Angle: 80°
Color Temperature: 6500K/4000K/3000K
Working Temperature: -10~45° C
Life Span: 30000H
Material: Dia-Cast Aluminium
Product Size: 183x102mm
Hole Size: Φ160mm

V-DLQ1112R/S

12W

Power: COB 12W
Input Voltage: AC220-240V 50/60Hz
Luminous Flux: ≥1020lm
CRI: ≥80
Beam Angle: 38°
Color Temperature: 6500K/4000K/3000K
Working Temperature: -10~45° C
Life Span: 30000H
Material: Dia-Cast Aluminium
Product Size: 135x81mm
Hole Size: Φ115mm

V-DLQ1135R/S

35W

Power: COB 35W
Input Voltage: AC220-240V 50/60Hz
Luminous Flux: ≥3000lm
CRI: ≥80
Beam Angle: 80°
Color Temperature: 6500K/4000K/3000K
Working Temperature: -10~45° C
Life Span: 30000H
Material: Dia-Cast Aluminium
Product Size: 231x125mm
Hole Size: Φ210mm



V-DLQ1206R/S

6W

Power: COB 6W
Input Voltage: AC220-240V 50/60Hz
Luminous Flux: ≥510lm
CRI: ≥80
Beam Angle: 38°
Color Temperature: 6500K/4000K/3000K
Working Temperature: -10~45° C
Life Span: 30000H
Material: Dia-Cast Aluminium
Product Size: 101x63mm
Hole Size: Φ90mm

V-DLQ1208R/S

8W

Power: COB 8W
Input Voltage: AC220-240V 50/60Hz
Luminous Flux: ≥680lm
CRI: ≥80
Beam Angle: 38°
Color Temperature: 6500K/4000K/3000K
Working Temperature: -10~45° C
Life Span: 30000H
Material: Dia-Cast Aluminium
Product Size: 109x63mm
Hole Size: Φ100mm

V-DLQ1225R/S

25W

Power: COB 25W
Input Voltage: AC220-240V 50/60Hz
Luminous Flux: ≥2200lm
CRI: ≥80
Beam Angle: 80°
Color Temperature: 6500K/4000K/3000K
Working Temperature: -10~45° C
Life Span: 30000H
Material: Dia-Cast Aluminium
Product Size: 171x68mm
Hole Size: Φ160mm

V-DLQ1220R/S

20W

Power: COB 20W
Input Voltage: AC220-240V 50/60Hz
Luminous Flux: ≥1800lm
CRI: ≥80
Beam Angle: 80°
Color Temperature: 6500K/4000K/3000K
Working Temperature: -10~45° C
Life Span: 30000H
Material: Dia-Cast Aluminium
Product Size: 140x68mm
Hole Size: Φ130mm



7/10/15/20/30/45 W LED



V-C1907 7W

Power: COB 7W
 Input Voltage: AC220-240V 50/60Hz
 Luminous Flux: ≥560lm
 CRi: ≥70
 Beam Angle: 120°
 Color Temperature: 6500K/4000K/3000K
 Surface Treatment: WH/SN/CH/HG
 Working Temperature: -10~45° C
 Life Span: 30000H
 Material: Dia-Cast Aluminium+Glass
 Product Size: Φ90x50mm
 Hole Size: Φ75mm

V-C1915 15W

Power: COB 15W
 Input Voltage: AC220-240V 50/60Hz
 Luminous Flux: ≥1400lm
 CRi: ≥70
 Beam Angle: 145°
 Color Temperature: 6500K/4000K/3000K
 Surface Treatment: WH/SN/CH/HG
 Working Temperature: -10~45° C
 Life Span: 30000H
 Material: Dia-Cast Aluminium+Glass
 Product Size: Φ173x75mm
 Hole Size: Φ155mm



V-C1910 10W

Power: COB 10W
 Input Voltage: AC220-240V 50/60Hz
 Luminous Flux: ≥880lm
 CRi: ≥70
 Beam Angle: 120°
 Color Temperature: 6500K/4000K/3000K
 Surface Treatment: WH/SN/CH/HG
 Working Temperature: -10~45° C
 Life Span: 30000H
 Material: Dia-Cast Aluminium+Glass
 Product Size: Φ130x68mm
 Hole Size: Φ110mm



LED 7/10/15/20/30/45 W



V-C1920 20W

Power: COB 20W
 Input Voltage: AC220-240V 50/60Hz
 Luminous Flux: ≥1300lm
 CRi: ≥70
 Beam Angle: 145°
 Color Temperature: 6500K/4000K/3000K
 Surface Treatment: WH/SN/CH/HG
 Working Temperature: -10~45° C
 Life Span: 30000H
 Material: Dia-Cast Aluminium+Glass
 Product Size: Φ195x80mm
 Hole Size: Φ175mm

V-C1930 30W

Power: COB 30W
 Input Voltage: AC220-240V 50/60Hz
 Luminous Flux: ≥2600lm
 CRi: ≥70
 Beam Angle: 145°
 Color Temperature: 6500K/4000K/3000K
 Surface Treatment: WH/SN/CH/HG
 Working Temperature: -10~45° C
 Life Span: 30000H
 Material: Dia-Cast Aluminium+Glass
 Product Size: Φ223x80mm
 Hole Size: Φ205mm

V-C1945 45W

Power: COB 45W
 Input Voltage: AC220-240V 50/60Hz
 Luminous Flux: ≥3800lm
 CRi: ≥70
 Beam Angle: 145°
 Color Temperature: 6500K/4000K/3000K
 Surface Treatment: WH/SN/CH/HG
 Working Temperature: -10~45° C
 Life Span: 30000H
 Material: Dia-Cast Aluminium++Glass
 Product Size: Φ260x87mm
 Hole Size: Φ220mm



10/15/20/30 W LED



MD-DLQ2010R 10 W

Power: COB 10W
 Input Voltage: AC220-240V 50/60Hz
 Luminous Flux: ≥800lm
 CRt: ≥70
 Beam Angle: 120°
 Color Temperature: 6500K/4000K/3000K
 Surface Treatment: WH/SN/CH/HG
 Working Temperature: -10~45° C
 Life Span: 25000H
 Material: Dia-Cast Aluminium+Glass
 Product Size: Φ124x36mm
 Hole Size: Φ110mm

MD-DLQ2015R 15 W

Power: COB 15W
 Input Voltage: AC220-240V 50/60Hz
 Luminous Flux: ≥1200lm
 CRt: ≥70
 Beam Angle: 120°
 Color Temperature: 6500K/4000K/3000K
 Surface Treatment: WH/SN/CH/HG
 Working Temperature: -10~45° C
 Life Span: 25000H
 Material: Dia-Cast Aluminium+Glass
 Product Size: Φ165x41mm
 Hole Size: Φ140mm

MD-DLQ2030R 30 W

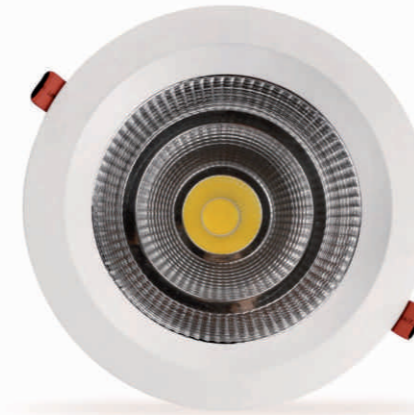
Power: COB 30W
 Input Voltage: AC220-240V 50/60Hz
 Luminous Flux: ≥2400lm
 CRt: ≥70
 Beam Angle: 120°
 Color Temperature: 6500K/4000K/3000K
 Surface Treatment: WH/SN/CH/HG
 Working Temperature: -10~45° C
 Life Span: 25000H
 Material: Dia-Cast Aluminium+Glass
 Product Size: Φ227x61mm
 Hole Size: Φ205mm



MD-DLQ2020R 20 W

Power: COB 20W
 Input Voltage: AC220-240V 50/60Hz
 Luminous Flux: ≥1600lm
 CRt: ≥70
 Beam Angle: 120°
 Color Temperature: 6500K/4000K/3000K
 Surface Treatment: WH/SN/CH/HG
 Working Temperature: -10~45° C
 Life Span: 25000H
 Material: Dia-Cast Aluminium+Glass
 Product Size: Φ187x48mm
 Hole Size: Φ170mm

LED 10/15/20/50 W



MD-DLQ2210R/S 10 W

Power: COB 10W
 Input Voltage: AC220-240V 50/60Hz
 Luminous Flux: ≥950lm
 CRt: ≥85
 Beam Angle: 38°
 Color Temperature: 6500K/4000K/3000K
 Surface Treatment: WH/SN/CH/HG
 Working Temperature: -10~45° C
 Life Span: 25000H
 Material: Dia-Cast Aluminium+Glass
 Product Size: 105x63mm
 Hole Size: Φ100mm

MD-DLQ2220R/S 20 W

Power: COB 20W
 Input Voltage: AC220-240V 50/60Hz
 Luminous Flux: ≥1900lm
 CRt: ≥70
 Beam Angle: 120°
 Color Temperature: 6500K/4000K/3000K
 Surface Treatment: WH/SN/CH/HG
 Working Temperature: -10~45° C
 Life Span: 25000H
 Material: Dia-Cast Aluminium+Glass
 Product Size: 195x90mm
 Hole Size: Φ182mm



MD-DLQ2215R/S 15 W

Power: COB 15W
 Input Voltage: AC220-240V 50/60Hz
 Luminous Flux: ≥1450lm
 CRt: ≥70
 Beam Angle: 120°
 Color Temperature: 6500K/4000K/3000K
 Surface Treatment: WH/SN/CH/HG
 Working Temperature: -10~45° C
 Life Span: 25000H
 Material: Dia-Cast Aluminium+Glass
 Product Size: 145x73mm
 Hole Size: Φ132mm

MD-DLQ2250R/S 50 W

Power: COB 50W
 Input Voltage: AC220-240V 50/60Hz
 Luminous Flux: ≥4800lm
 CRt: ≥85
 Beam Angle: 38°
 Color Temperature: 6500K/4000K/3000K
 Surface Treatment: WH/SN/CH/HG
 Working Temperature: -10~45° C
 Life Span: 25000H
 Material: Dia-Cast Aluminium+Glass
 Product Size: 230x103mm
 Hole Size: Φ215mm



LED Smart Down Light



Maximize the Value of Lighting

LED Smart Down Light



V-DLQ0808RY 8W

Power: SMD 8W
 Input Voltage: AC220-240V 50/60Hz
 Luminous Flux: $\geq 550\text{lm}$
 CRt: ≥ 80
 Beam Angle: 120°
 Color Temperature: 3000K-6500K
 Working Temperature: -10-45° C
 Life Span: 30000H
 Material: Dia-Cast Aluminium+PC
 Product Size: $\Phi 103 \times 78\text{mm}$
 Hole Size: $\Phi 85\text{mm}$

V-DLQ0812RY 12W

Power: SMD 12W
 Input Voltage: AC220-240V 50/60Hz
 Luminous Flux: $\geq 850\text{lm}$
 CRt: ≥ 80
 Beam Angle: 120°
 Color Temperature: 3000K-6500K
 Working Temperature: -10-45° C
 Life Span: 30000H
 Material: Dia-Cast Aluminium+PC
 Product Size: $\Phi 120 \times 87\text{mm}$
 Hole Size: $\Phi 100\text{mm}$

V-DLQ0815RY 15W

Power: SMD 15W
 Input Voltage: AC220-240V 50/60Hz
 Luminous Flux: $\geq 1200\text{lm}$
 CRt: ≥ 80
 Beam Angle: 120°
 Color Temperature: 3000K-6500K
 Working Temperature: -10-45° C
 Life Span: 30000H
 Material: Dia-Cast Aluminium+PC
 Product Size: $\Phi 159 \times 101\text{mm}$
 Hole Size: $\Phi 140\text{mm}$

V-DLQ0820RY 20W

Power: SMD 20W
 Input Voltage: AC220-240V 50/60Hz
 Luminous Flux: $\geq 1600\text{lm}$
 CRt: ≥ 80
 Beam Angle: 120°
 Color Temperature: 3000K-6500K
 Working Temperature: -10-45° C
 Life Span: 30000H
 Material: Dia-Cast Aluminium+PC
 Product Size: $181 \times 105\text{mm}$
 Hole Size: $\Phi 155\text{mm}$

LED Down Light





V-DLQ0908RF

8W

Power: SMD 7+1W
 Input Voltage: AC220-240V 50/60Hz
 Luminous Flux: $\geq 550\text{lm}$
 CRI: ≥ 80
 Beam Angle: 120°
 Color Temperature: 6500K/4000K/3000K
 Working Temperature: -10~45° C
 Life Span: 30000H
 Material: Dia-Cast Aluminium+PC
 Product Size: $\Phi 100 \times 70\text{mm}$
 Hole Size: $\Phi 90\text{mm}$

V-DLQ0912RF

12W

Power: SMD 11+1W
 Input Voltage: AC220-240V 50/60Hz
 Luminous Flux: $\geq 850\text{lm}$
 CRI: ≥ 80
 Beam Angle: 120°
 Color Temperature: 6500K/4000K/3000K
 Working Temperature: -10~45° C
 Life Span: 30000H
 Material: Dia-Cast Aluminium+PC
 Product Size: $\Phi 117 \times 80\text{mm}$
 Hole Size: $\Phi 105\text{mm}$

V-DLQ0915RF

15W

Power: SMD 13+2W
 Input Voltage: AC220-240V 50/60Hz
 Luminous Flux: $\geq 1200\text{lm}$
 CRI: ≥ 80
 Beam Angle: 120°
 Color Temperature: 6500K/4000K/3000K
 Working Temperature: -10~45° C
 Life Span: 30000H
 Material: Dia-Cast Aluminium+PC
 Product Size: $\Phi 155 \times 91\text{mm}$
 Hole Size: $\Phi 140\text{mm}$

V-DLQ0920RF

20W

Power: SMD 18+2W
 Input Voltage: AC220-240V 50/60Hz
 Luminous Flux: $\geq 1600\text{lm}$
 CRI: ≥ 80
 Beam Angle: 120°
 Color Temperature: 6500K/4000K/3000K
 Working Temperature: -10~45° C
 Life Span: 30000H
 Material: Dia-Cast Aluminium+PC
 Product Size: $\Phi 179 \times 91\text{mm}$
 Hole Size: $\Phi 160\text{mm}$



MD-DLM2312R

12W

Power: COB 12W
 Input Voltage: AC220-240V 50/60Hz
 Luminous Flux: $\geq 1000\text{lm}$
 CRI: ≥ 80
 Beam Angle: 24°
 Color Temperature: 6500K/4000K/3000K
 Surface Treatment: WH/BK
 Working Temperature: -10~45° C
 Life Span: 25000H
 Material: Aluminium+PC
 Product Size: $\Phi 80 \times 100\text{mm}$

MD-DLM2324R

24W

Power: COB 24W
 Input Voltage: AC220-240V 50/60Hz
 Luminous Flux: $\geq 2100\text{lm}$
 CRI: ≥ 80
 Beam Angle: 24°
 Color Temperature: 6500K/4000K/3000K
 Surface Treatment: WH/BK
 Working Temperature: -10~45° C
 Life Span: 25000H
 Material: Aluminium+PC
 Product Size: $\Phi 105 \times 135\text{mm}$

MD-DLM2330R

30W

Power: COB 30W
 Input Voltage: AC220-240V 50/60Hz
 Luminous Flux: $\geq 2700\text{lm}$
 CRI: ≥ 80
 Beam Angle: 24°
 Color Temperature: 6500K/4000K/3000K
 Surface Treatment: WH/BK
 Working Temperature: -10~45° C
 Life Span: 25000H
 Material: Aluminium+PC
 Product Size: $\Phi 170 \times 145\text{mm}$



5/8/12/15/20/25/30 W NEW LED



V-DLM1305R 5W

Power: SMD 5W
 Input Voltage: AC220-240V 50/60Hz
 Luminous Flux: ≥380lm
 CRI: ≥85
 Beam Angle: 120°
 Color Temperature: 6500K/4000K/3000K
 Working Temperature: -10-45° C
 Life Span: 30000H
 Material: Aluminium+PC
 Product Size: Φ55x68mm

V-DLM1312R 12W

Power: SMD 12W
 Input Voltage: AC220-240V 50/60Hz
 Luminous Flux: ≥960lm
 CRI: ≥85
 Beam Angle: 120°
 Color Temperature: 6500K/4000K/3000K
 Working Temperature: -10-45° C
 Life Span: 30000H
 Material: Aluminium+PC
 Product Size: Φ94x97mm

V-DLM1308R 8W

Power: SMD 8W
 Input Voltage: AC220-240V 50/60Hz
 Luminous Flux: ≥610lm
 CRI: ≥85
 Beam Angle: 120°
 Color Temperature: 6500K/4000K/3000K
 Working Temperature: -10-45° C
 Life Span: 30000H
 Material: Aluminium+PC
 Product Size: Φ75x85mm

V-DLM1315R 15W

Power: SMD 15W
 Input Voltage: AC220-240V 50/60Hz
 Luminous Flux: ≥1200lm
 CRI: ≥85
 Beam Angle: 120°
 Color Temperature: 6500K/4000K/3000K
 Working Temperature: -10-45° C
 Life Span: 30000H
 Material: Aluminium+PC
 Product Size: Φ114x109mm

LED NEW 5/8/12/15/20/25/30 W

V-DLM1320R 20W

Power: SMD 20W
 Input Voltage: AC220-240V 50/60Hz
 Luminous Flux: ≥1600lm
 CRI: ≥85
 Beam Angle: 120°
 Color Temperature: 6500K/4000K/3000K
 Working Temperature: -10-45° C
 Life Span: 30000H
 Material: Aluminium+PC
 Product Size: Φ139x125mm

V-DLM1330R 30W

Power: SMD 30W
 Input Voltage: AC220-240V 50/60Hz
 Luminous Flux: ≥2600lm
 CRI: ≥85
 Beam Angle: 120°
 Color Temperature: 6500K/4000K/3000K
 Working Temperature: -10-45° C
 Life Span: 30000H
 Material: Aluminium+PC
 Product Size: Φ180x145mm

V-DLM1325R 25W

Power: SMD 25W
 Input Voltage: AC220-240V 50/60Hz
 Luminous Flux: ≥2000lm
 CRI: ≥85
 Beam Angle: 120°
 Color Temperature: 6500K/4000K/3000K
 Working Temperature: -10-45° C
 Life Span: 30000H
 Material: Aluminium+PC
 Product Size: Φ159x126mm



LED Spot Light



Maximize the Value
of Lighting

LED Spot Light



V-CLQ1807R

7W

Power: COB 7W
 Input Voltage: AC100-240V 50/60Hz
 Luminous Flux: $\geq 640\text{lm}$
 CRI: ≥ 70
 Beam Angle: 15-45°
 Color Temperature: 6500K/4000K/3000K
 Surface Treatment: WH/SN/CH
 Working Temperature: -10-45° C
 Life Span: 30000H
 Material: Dia-Cast Aluminium
 Product Size: $\Phi 116 \times 81\text{mm}$
 Hole Size: $\Phi 95\text{mm}$

V-CLQ1812R

12W

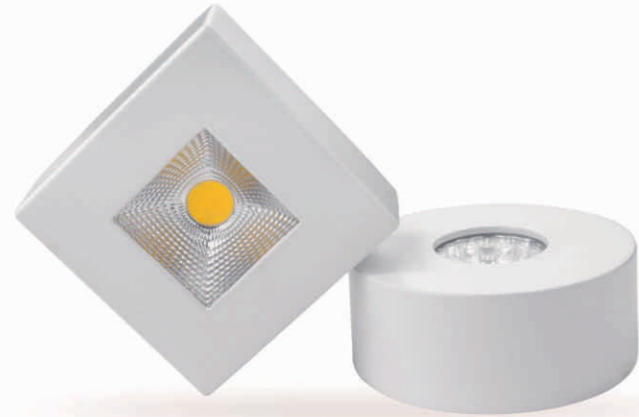
Power: COB 12W
 Input Voltage: AC100-240V 50/60Hz
 Luminous Flux: $\geq 920\text{lm}$
 CRI: ≥ 70
 Beam Angle: 15-45°
 Color Temperature: 6500K/4000K/3000K
 Surface Treatment: WH/SN/CH
 Working Temperature: -10-45° C
 Life Span: 30000H
 Material: Dia-Cast Aluminium
 Product Size: $\Phi 110 \times 60\text{mm}$
 Hole Size: $\Phi 95\text{mm}$

V-0504

8W

Power: COB 8W
 Input Voltage: AC220-240V 50/60Hz
 Luminous Flux: $\geq 620\text{lm}$
 CRI: ≥ 70
 Beam Angle: 60°
 Color Temperature: 6500K/4000K/3000K
 Surface Treatment: WH/SN/SG/WH+CH/ AB/RB
 Working Temperature: -10-45° C
 Life Span: 30000H
 Material: Dia-Cast Aluminium
 Product Size: $\Phi 95 \times 55\text{mm}$
 Hole Size: $\Phi 85\text{mm}$





V-CLM0903R/S 3W

Power: COB 3W
 Input Voltage: AC220-240V 50/60Hz
 Luminous Flux: \geq 2500lm
 CRi: \geq 75
 Beam Angle: 24°
 Color Temperature: 6500K/4000K/3000K
 Working Temperature: -10~45° C
 Life Span: 30000H
 Material: Dia-Cast Aluminium
 Product Size: 60x23mm



V-CLQ0107R/S 7W

Power: COB 7W
 Input Voltage: AC100-240V 50/60Hz
 Luminous Flux: \geq 640lm
 CRi: \geq 72
 Beam Angle: 45°
 Color Temperature: 6500K/4000K/3000K
 Surface Treatment: WH
 Working Temperature: -10~45° C
 Life Span: 30000H
 Material: Dia-Cast Aluminium
 Product Size: 98x42mm
 Hole Size: ϕ 90mm

V-CLQ0112R/S 12W

Power: COB 12W
 Input Voltage: AC100-240V 50/60Hz
 Luminous Flux: \geq 990lm
 CRi: \geq 72
 Beam Angle: 45°
 Color Temperature: 6500K/4000K/3000K
 Surface Treatment: WH
 Working Temperature: -10~45° C
 Life Span: 30000H
 Material: Dia-Cast Aluminium
 Product Size: 115x42mm
 Hole Size: ϕ 106mm



**V-CLM0603R/
V-CLM0703I** 3W

Power: 3W
 Input Voltage: AC220-240V 50/60Hz
 CRi: \geq 75
 Beam Angle: 24°
 Color Temperature: 6500K/4000K/3000K
 Working Temperature: -10~45° C
 Life Span: 30000H
 Material: Dia-Cast Aluminium
 Product Size: 45x50mm



V-CLM0803R/S 3W

Power: 3W
 Input Voltage: AC220-240V 50/60Hz
 CRi: \geq 75
 Beam Angle: 24°
 Color Temperature: 6500K/4000K/3000K
 Working Temperature: -10~45° C
 Life Span: 30000H
 Material: Dia-Cast Aluminium
 Product Size: 60x55mm

V-CLM0107R/S 7W

Power: COB 7W
 Input Voltage: AC100-240V 50/60Hz
 Luminous Flux: \geq 640lm
 CRi: \geq 72
 Beam Angle: 45°
 Color Temperature: 6500K/4000K/3000K
 Surface Treatment: WH
 Working Temperature: -10~45° C
 Life Span: 30000H
 Material: Dia-Cast Aluminium
 Product Size: ϕ 98x42mm

V-CLM0112R/S 12W

Power: COB 12W
 Input Voltage: AC100-240V 50/60Hz
 Luminous Flux: \geq 990lm
 CRi: \geq 72
 Beam Angle: 45°
 Color Temperature: 6500K/4000K/3000K
 Surface Treatment: WH
 Working Temperature: -10~45° C
 Life Span: 30000H
 Material: Dia-Cast Aluminium
 Product Size: ϕ 118x50mm



LED Spot Light

LED Spot Light



V-3007A
V-3107A 7W

Power: COB 7W
Input Voltage: AC220-240V 50/60Hz
Luminous Flux: $\geq 660\text{lm}$
CRI: ≥ 75
Beam Angle: 45°
Color Temperature: 6500K/4000K/3000K
Surface Treatment: WH/SN/CH/HG/SL
Working Temperature: -10-45° C
Life Span: 30000H
Material: Dia-Cast Aluminium
Product Size: 85x62mm
Hole Size: $\Phi 75\text{mm}$

V-3012A
V-3112A 12W

Power: COB 12W
Input Voltage: AC220-240V 50/60Hz
Luminous Flux: $\geq 850\text{lm}$
CRI: ≥ 75
Beam Angle: 45°
Color Temperature: 6500K/4000K/3000K
Surface Treatment: WH/SN/CH/HG/SL
Working Temperature: -10-45° C
Life Span: 30000H
Material: Dia-Cast Aluminium
Product Size: 105x65mm
Hole Size: $\Phi 90\text{mm}$

V-3207A 7W

Power: COB 7W
Input Voltage: AC220-240V 50/60Hz
Luminous Flux: $\geq 660\text{lm}$
CRI: ≥ 75
Beam Angle: 45°
Color Temperature: 6500K/4000K/3000K
Surface Treatment: WH/SN/CH/HG/SL
Working Temperature: -10-45° C
Life Span: 30000H
Material: Dia-Cast Aluminium
Product Size: $\Phi 85 \times 62\text{mm}$
Hole Size: $\Phi 75\text{mm}$

V-3212A 12W

Power: COB 12W
Input Voltage: AC220-240V 50/60Hz
Luminous Flux: $\geq 750\text{lm}$
CRI: ≥ 75
Beam Angle: 45°
Color Temperature: 6500K/4000K/3000K
Surface Treatment: WH/SN/CH/HG/SL
Working Temperature: -10-45° C
Life Span: 30000H
Material: Dia-Cast Aluminium
Product Size: $\Phi 105 \times 65\text{mm}$
Hole Size: $\Phi 90\text{mm}$



MD-C0305 5W

Power: COB 5W
Input Voltage: AC100-240V 50/60Hz
Luminous Flux: $\geq 400\text{lm}$
CRI: ≥ 70
Beam Angle: 45°
Color Temperature: 6500K/4000K/3000K
Surface Treatment: WH/CH/SG/SL
Working Temperature: -10-45° C
Life Span: 25000H
Material: Dia-Cast Aluminium+PC
Product Size: $\Phi 85 \times 40\text{mm}$
Hole Size: $\Phi 75\text{mm}$

MD-C0307 7W

Power: COB 7W
Input Voltage: AC100-240V 50/60Hz
Luminous Flux: $\geq 500\text{lm}$
CRI: ≥ 70
Beam Angle: 45°
Color Temperature: 6500K/4000K/3000K
Surface Treatment: WH/CH/SG/SL
Working Temperature: -10-45° C
Life Span: 25000H
Material: Dia-Cast Aluminium+PC
Product Size: $\Phi 110 \times 50\text{mm}$
Hole Size: $\Phi 90\text{mm}$

MD-C0405
MD-C0505 5W

Power: COB 5W
Input Voltage: AC100-240V 50/60Hz
Luminous Flux: $\geq 400\text{lm}$
CRI: ≥ 70
Beam Angle: 45°
Color Temperature: 6500K/4000K/3000K
Surface Treatment: WH+CH/WH+HG
Working Temperature: -10-45° C
Life Span: 25000H
Material: Dia-Cast Aluminium+PC
Product Size: $\Phi 85 \times 40\text{mm}$
Hole Size: $\Phi 75\text{mm}$

MD-C0407
MD-C0507 7W

Power: COB 7W
Input Voltage: AC100-240V 50/60Hz
Luminous Flux: $\geq 500\text{lm}$
CRI: ≥ 70
Beam Angle: 45°
Color Temperature: 6500K/4000K/3000K
Surface Treatment: WH+CH/WH+HG
Working Temperature: -10-45° C
Life Span: 25000H
Material: Dia-Cast Aluminium+PC
Product Size: $\Phi 110 \times 50\text{mm}$
Hole Size: $\Phi 95\text{mm}$





MD-CLQ0207R 7W

Power: COB 7W
 Input Voltage: AC220-240V 50/60Hz
 Luminous Flux: \geq 680lm
 CRI: \geq 85
 Beam Angle: 38°
 Color Temperature: 6500K/4000K/3000K
 Surface Treatment: WH/SN/CH/HG
 Working Temperature: -10~45° C
 Life Span: 25000H
 Material: Dia-Cast Aluminium
 Product Size: Φ 85x55mm
 Hole Size: Φ 72mm



MD-CLQ0212R 12W

Power: COB 12W
 Input Voltage: AC220-240V 50/60Hz
 Luminous Flux: \geq 1100lm
 CRI: \geq 85
 Beam Angle: 60°
 Color Temperature: 6500K/4000K/3000K
 Surface Treatment: WH/SN/CH/HG
 Working Temperature: -10~45° C
 Life Span: 25000H
 Material: Dia-Cast Aluminium
 Product Size: Φ 109x63mm
 Hole Size: Φ 96mm

MD-CLQ0220R 20W

Power: COB 20W
 Input Voltage: AC220-240V 50/60Hz
 Luminous Flux: \geq 2100lm
 CRI: \geq 85
 Beam Angle: 38°
 Color Temperature: 6500K/4000K/3000K
 Surface Treatment: WH/SN/CH/HG
 Working Temperature: -10~45° C
 Life Span: 25000H
 Material: Dia-Cast Aluminium
 Product Size: Φ 136x71mm
 Hole Size: Φ 125mm

MD-CLQ0307R 7W

Power: COB 7W
 Input Voltage: AC220-240V 50/60Hz
 Luminous Flux: \geq 480lm
 CRI: \geq 75
 Beam Angle: 35°
 Color Temperature: 6500K/4000K/3000K
 Working Temperature: -10~45° C
 Life Span: 25000H
 Material: Dia-Cast Aluminium
 Product Size: Φ 93x47mm
 Hole Size: Φ 75mm



MD-K0005W/S/G 5W

Power: COB 5W
 Input Voltage: AC100-240V 50/60Hz
 Luminous Flux: \geq 400lm
 CRI: \geq 70
 Beam Angle: 45°
 Color Temperature: 6500K/4000K/3000K
 Surface Treatment: WH/WH+CH/WH+HG
 Working Temperature: -10~45° C
 Life Span: 25000H
 Material: Dia-Cast Aluminium+PC
 Product Size: Φ 85x45mm
 Hole Size: Φ 75mm



MD-K0008W/S/G 8W

Power: COB 8W
 Input Voltage: AC100-240V 50/60Hz
 Luminous Flux: \geq 650lm
 CRI: \geq 70
 Beam Angle: 45°
 Color Temperature: 6500K/4000K/3000K
 Surface Treatment: WH/WH+CH/WH+HG
 Working Temperature: -10~45° C
 Life Span: 25000H
 Material: Dia-Cast Aluminium+PC
 Product Size: Φ 109x50mm
 Hole Size: Φ 95mm



LED Spot Light

LED Spot Light



V-AR111-18W 18W

Power: COB 18W
 Input Voltage: AC220-240V 50/60Hz
 Luminous Flux: $\geq 1600\text{lm}$
 CRI: ≥ 90
 Beam Angle: 18°
 Color Temperature: 6500K/4000K/3000K
 Working Temperature: -10-45° C
 Life Span: 30000H
 Material: Dia-Cast Aluminium
 Product Size: $\Phi 111 \times 53\text{mm}$



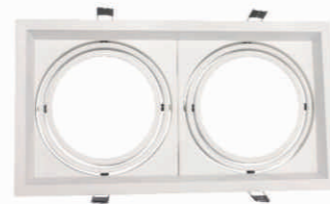
V-GLQ0418S

Material: Dia-Cast Aluminium
 Product Size: 185x185x41mm
 Hole Size: 170x170mm



V-GLQ0454L

Material: Dia-Cast Aluminium
 Product Size: 486x185x41mm
 Hole Size: 470x170mm



V-GLQ0436L

Material: Dia-Cast Aluminium
 Product Size: 335x185x41mm
 Hole Size: 320x170mm



V-X110-1 30W

Power: COB 30W
 Input Voltage: AC100-240V 50/60Hz
 Luminous Flux: $\geq 3000\text{lm}$
 CRI: ≥ 80
 Beam Angle: 24°
 Color Temperature: 6500K/4000K/3000K
 Working Temperature: -10-45° C
 Life Span: 30000H
 Material: Dia-Cast Aluminium
 Product Size: 185x185x110mm
 Hole Size: 158x158mm

V-X110-3 90W

Power: COB 3x30W
 Input Voltage: AC100-240V 50/60Hz
 Luminous Flux: $\geq 8000\text{lm}$
 CRI: ≥ 80
 Beam Angle: 24°
 Color Temperature: 6500K/4000K/3000K
 Working Temperature: -10-45° C
 Life Span: 30000H
 Material: Dia-Cast Aluminium
 Product Size: 495x186x115mm
 Hole Size: 467x158mm



V-X110-2 60W

Power: COB 2x30W
 Input Voltage: AC100-240V 50/60Hz
 Luminous Flux: $\geq 4800\text{lm}$
 CRI: ≥ 80
 Beam Angle: 24°
 Color Temperature: 6500K/4000K/3000K
 Working Temperature: -10-45° C
 Life Span: 30000H
 Material: Dia-Cast Aluminium
 Product Size: 350x186x109mm
 Hole Size: 307x158mm



LED Spot Light

LED Spot Light



18/36/48 W LED



V-X180-1 18W

Power: COB 18W
 Input Voltage: AC100-240V 50/60Hz
 Luminous Flux: ≥1500lm
 CRI: ≥80
 Beam Angle: 24°
 Color Temperature: 6500K/4000K/3000K
 Working Temperature: -10~45° C
 Life Span: 30000H
 Material: Dia-Cast Aluminium
 Product Size: 137x137x104mm
 Hole Size: 125x125mm



V-X180-2 36W

Power: COB 2x18W
 Input Voltage: AC100-240V 50/60Hz
 Luminous Flux: ≥2500lm
 CRI: ≥80
 Beam Angle: 24°
 Color Temperature: 6500K/4000K/3000K
 Working Temperature: -10~45° C
 Life Span: 30000H
 Material: Dia-Cast Aluminium
 Product Size: 266x137x104mm
 Hole Size: 250x120mm

V-X180-3 48W

Power: COB 3x18W
 Input Voltage: AC100-240V 50/60Hz
 Luminous Flux: ≥3600lm
 CRI: ≥80
 Beam Angle: 24°
 Color Temperature: 6500K/4000K/3000K
 Working Temperature: -10~45° C
 Life Span: 30000H
 Material: Dia-Cast Aluminium
 Product Size: 372x137x104mm
 Hole Size: 355x120mm

LED 12/24/36 W



V-X160-1 12W

Power: COB 12W
 Input Voltage: AC100-240V 50/60Hz
 Luminous Flux: ≥1000lm
 CRI: ≥80
 Beam Angle: 24°
 Color Temperature: 6500K/4000K/3000K
 Working Temperature: -10~45° C
 Life Span: 30000H
 Material: Dia-Cast Aluminium
 Product Size: 108x108x78mm
 Hole Size: 100x100mm



V-X160-2 24W

Power: COB 2x12W
 Input Voltage: AC100-240V 50/60Hz
 Luminous Flux: ≥2000lm
 CRI: ≥80
 Beam Angle: 24°
 Color Temperature: 6500K/4000K/3000K
 Working Temperature: -10~45° C
 Life Span: 30000H
 Material: Dia-Cast Aluminium
 Product Size: 210x108x78mm
 Hole Size: 195x95mm

V-X160-3 36W

Power: COB 3x12W
 Input Voltage: AC100-240V 50/60Hz
 Luminous Flux: ≥3000lm
 CRI: ≥80
 Beam Angle: 24°
 Color Temperature: 6500K/4000K/3000K
 Working Temperature: -10~45° C
 Life Span: 30000H
 Material: Dia-Cast Aluminium
 Product Size: 297x108x77mm
 Hole Size: 280x95mm



LED Spot Light

LED Spot Light



18/30/60 W LED

LED NEW 30/35/40/45 W



V-CLQ0530R 30W

Power: COB 30W
 Input Voltage: AC100-240V 50/60Hz
 Luminous Flux: ≥2500lm
 CRI: ≥80
 Beam Angle: 24°
 Color Temperature: 6500K/4000K/3000K
 Working Temperature: -10-45° C
 Life Span: 30000H
 Material: Dia-Cast Aluminium
 Product Size: Φ125x71mm
 Hole Size: Φ117mm

V-PQ0735L V-PQ0745L 35/45W

Power: COB 35W/45W
 Input Voltage: AC220-240V 50/60Hz
 Luminous Flux: ≥3000lm/3800lm
 CRI: ≥80
 Beam Angle: 90°
 Color Temperature: 6500K/4000K/3000K
 Surface Treatment: WH+BK
 Working Temperature: -10-45° C
 Life Span: 30000H
 Material: Dia-Cast Aluminium
 Product Size: 246x153x145mm
 Hole Size: 235x130mm



V-CLQ05230E 60W

Power: COB 2x30W
 Input Voltage: AC100-240V 50/60Hz
 Luminous Flux: ≥4800lm
 CRI: ≥80
 Beam Angle: 24°
 Color Temperature: 6500K/4000K/3000K
 Working Temperature: -10-45° C
 Life Span: 30000H
 Material: Dia-Cast Aluminium
 Product Size: 275x125x71mm
 Hole Size: 245X115mm



V-0730 30W

Power: COB 30W
 Input Voltage: AC220-240V 50/60Hz
 Luminous Flux: ≥2300lm
 CRI: ≥75
 Beam Angle: 140°
 Color Temperature: 6500K/4000K/3000K
 Surface Treatment: WH/SN/CH
 Working Temperature: -10-45° C
 Life Span: 30000H
 Material: Dia-Cast Aluminium
 Product Size: 240x150x110mm
 Hole Size: 230X130mm

MD-PQ1040L 40W

Power: COB 40W
 Input Voltage: AC220-240V 50/60Hz
 Luminous Flux: ≥3100lm
 CRI: ≥80
 Beam Angle: 140°
 Color Temperature: 6500K/4000K/3000K
 Surface Treatment: WH/SN/CH
 Working Temperature: -10-45° C
 Life Span: 30000H
 Material: Dia-Cast Aluminium
 Product Size: 230x145x110mm
 Hole Size: 220X128mm



V-AR111D-18W 18W

Power: COB 18W
 Input Voltage: AC220-240V 50/60Hz
 Luminous Flux: ≥1500lm
 CRI: ≥90
 Beam Angle: 18°
 Color Temperature: 6500K/4000K/3000K
 Surface Treatment: WH/BK
 Working Temperature: -10-45° C
 Life Span: 30000H
 Material: Dia-Cast Aluminium
 Product Size: Φ110x60mm



LED Spot Light

LED Spot Light



V-CLQ1730R 30W

Power: COB 30W
 Input Voltage: AC100-240V 50/60Hz
 Luminous Flux: $\geq 2500\text{lm}$
 CRI: ≥ 80
 Beam Angle: 24°
 Color Temperature: 6500K/4000K/3000K
 Working Temperature: -10~45° C
 Life Span: 30000H
 Material: Dia-Cast Aluminium
 Product Size: $\Phi 125 \times 71\text{mm}$
 Hole Size: $\Phi 117\text{mm}$

V-CLQ1712R 12W

Power: COB 12W
 Input Voltage: AC100-240V 50/60Hz
 Luminous Flux: $\geq 1000\text{lm}$
 CRI: ≥ 80
 Beam Angle: 24°
 Color Temperature: 6500K/4000K/3000K
 Working Temperature: -10~45° C
 Life Span: 30000H
 Material: Dia-Cast Aluminium
 Product Size: $\Phi 89 \times 56\text{mm}$
 Hole Size: $\Phi 71\text{mm}$



V-CLQ17212E 24W

Power: COB 2x12W
 Input Voltage: AC100-240V 50/60Hz
 Luminous Flux: $\geq 2000\text{lm}$
 CRI: ≥ 80
 Beam Angle: 24°
 Color Temperature: 6500K/4000K/3000K
 Working Temperature: -10~45° C
 Life Span: 30000H
 Material: Dia-Cast Aluminium
 Product Size: 224x120x56mm
 Hole Size: 190x90mm



V-CLQ17230E 60W

Power: COB 2x30W
 Input Voltage: AC100-240V 50/60Hz
 Luminous Flux: $\geq 4800\text{lm}$
 CRI: ≥ 80
 Beam Angle: 24°
 Color Temperature: 6500K/4000K/3000K
 Working Temperature: -10~45° C
 Life Span: 30000H
 Material: Dia-Cast Aluminium
 Product Size: 275x125x71mm
 Hole Size: 245x115mm



V-CLQ17330E 90W

Power: COB 3x30W
 Input Voltage: AC100-240V 50/60Hz
 Luminous Flux: $\geq 7200\text{lm}$
 CRI: ≥ 80
 Beam Angle: 24°
 Color Temperature: 6500K/4000K/3000K
 Working Temperature: -10~45° C
 Life Span: 30000H
 Material: Dia-Cast Aluminium
 Product Size: 405x125x71mm
 Hole Size: 365x115mm



V-CLQ17312E 36W

Power: COB 3x12W
 Input Voltage: AC100-240V 50/60Hz
 Luminous Flux: $\geq 3000\text{lm}$
 CRI: ≥ 80
 Beam Angle: 24°
 Color Temperature: 6500K/4000K/3000K
 Working Temperature: -10~45° C
 Life Span: 30000H
 Material: Dia-Cast Aluminium
 Product Size: 326x120x56mm
 Hole Size: 290x90mm



V-X630W

30W

Power: COB 30W
 Input Voltage: AC220-240V 50/60Hz
 Luminous Flux: ≥2800lm
 CRI: ≥80
 Beam Angle: 24°
 Color Temperature: 6500K/4000K/3000K
 Working Temperature: -10~45° C
 Life Span: 30000H
 Material: Dia-Cast Aluminium
 Product Size: Φ155x135mm
 Hole Size: Φ150mm



MD-CLQ1230R

30W

Power: COB 30W
 Input Voltage: AC220-240V 50/60Hz
 Luminous Flux: ≥2600lm
 CRI: ≥80
 Beam Angle: 24°
 Color Temperature: 6500K/4000K/3000K
 Working Temperature: -10~45° C
 Life Span: 25000H
 Material: Dia-Cast Aluminium
 Product Size: Φ155x130mm
 Hole Size: Φ145mm



MD-CLQ1330R

30W

Power: COB 30W
 Input Voltage: AC220-240V 50/60Hz
 Luminous Flux: ≥2600lm
 CRI: ≥80
 Beam Angle: 24°
 Color Temperature: 6500K/4000K/3000K
 Working Temperature: -10~45° C
 Life Span: 25000H
 Material: Dia-Cast Aluminium
 Product Size: Φ160x109mm
 Hole Size: Φ145mm

LED Ceiling Light



Maximize the Value of Lighting





V-SD0548RY

48W

Power: SMD 48W
 Input Voltage: AC220-240V 50/60Hz
 Luminous Flux: $\geq 3800\text{lm}$
 CRI: ≥ 75
 Color Temperature: 6500K/4000K/3000K
 Red/Green/Blue/Yellow/Purple
 Lamp Edge: Silver /Golden/White
 Working Temperature: $-10\sim 45^\circ\text{C}$
 Life Span: 30000H
 Material: Plastic
 Product Size: $\phi 500 \times 60\text{mm}$

V-SD0558RY

58W

Power: SMD 58W
 Input Voltage: AC220-240V 50/60Hz
 Luminous Flux: $\geq 4600\text{lm}$
 CRI: ≥ 75
 Color Temperature: 6500K/4000K/3000K
 Red/Green/Blue/Yellow/Purple
 Lamp Edge: Silver /Golden/White
 Working Temperature: $-10\sim 45^\circ\text{C}$
 Life Span: 30000H
 Material: Plastic
 Product Size: $\phi 620 \times 60\text{mm}$



V-SD0648RY

48W

Power: SMD 48W
 Input Voltage: AC220-240V 50/60Hz
 Luminous Flux: $\geq 3800\text{lm}$
 CRI: ≥ 75
 Color Temperature: 6500K/4000K/3000K
 Red/Green/Blue/Yellow/Purple
 Lamp Edge: Silver /Golden/White/Blue
 Working Temperature: $-10\sim 45^\circ\text{C}$
 Life Span: 30000H
 Material: Plastic
 Product Size: $\phi 500 \times 60\text{mm}$

V-SD0658RY

58W

Power: SMD 58W
 Input Voltage: AC220-240V 50/60Hz
 Luminous Flux: $\geq 4600\text{lm}$
 CRI: ≥ 75
 Color Temperature: 6500K/4000K/3000K
 Red/Green/Blue/Yellow/Purple
 Lamp Edge: Silver /Golden/White/Blue
 Working Temperature: $-10\sim 45^\circ\text{C}$
 Life Span: 30000H
 Material: Plastic
 Product Size: $\phi 620 \times 60\text{mm}$



V-SD0736SY

36W

Power: SMD 36W
 Input Voltage: AC220-240V 50/60Hz
 Luminous Flux: $\geq 2900\text{lm}$
 CRI: ≥ 75
 Color Temperature: 6500K/4000K/3000K
 Red/Green/Blue/Yellow/Purple
 Lamp Edge: Silver /Golden/White/Blue
 Working Temperature: $-10\sim 45^\circ\text{C}$
 Life Span: 30000H
 Material: Plastic
 Product Size: $350 \times 350 \times 60\text{mm}$

V-SD0758SY

58W

Power: SMD 58W
 Input Voltage: AC220-240V 50/60Hz
 Luminous Flux: $\geq 4600\text{lm}$
 CRI: ≥ 75
 Color Temperature: 6500K/4000K/3000K
 Red/Green/Blue/Yellow/Purple
 Lamp Edge: Silver /Golden/White/Blue
 Working Temperature: $-10\sim 45^\circ\text{C}$
 Life Span: 30000H
 Material: Plastic
 Product Size: $520 \times 520 \times 60\text{mm}$



V-SD0940RY

40W

Power: SMD 40W
 Input Voltage: AC220-240V 50/60Hz
 Luminous Flux: $\geq 3200\text{lm}$
 CRI: ≥ 75
 Color Temperature: 6500K/4000K/3000K
 Red/Green/Blue/Yellow/Purple
 Lamp Edge: Silver /Golden
 Working Temperature: $-10\sim 45^\circ\text{C}$
 Life Span: 30000H
 Material: Plastic
 Product Size: $\phi 480 \times 38\text{mm}$



LED
CeilingLight

LED
CeilingLight



V-SD1117RY

17W

Power: SMD 17W
 Input Voltage: AC220-240V 50/60Hz
 Luminous Flux: $\geq 1400\text{lm}$
 CR: ≥ 75
 Color Temperature: 6500K/4000K/3000K
 Red/Green/Blue/Yellow/Purple
 Working Temperature: $-10\sim 45^\circ\text{C}$
 Life Span: 30000H
 Material: Plastic
 Product Size: $\Phi 380 \times 50\text{mm}$



V-SD1127RY

27W

Power: SMD 27W
 Input Voltage: AC220-240V 50/60Hz
 Luminous Flux: $\geq 2200\text{lm}$
 CR: ≥ 75
 Color Temperature: 6500K/4000K/3000K
 Red/Green/Blue/Yellow/Purple
 Working Temperature: $-10\sim 45^\circ\text{C}$
 Life Span: 30000H
 Material: Plastic
 Product Size: $\Phi 480 \times 50\text{mm}$



V-SD1217RY

17W

Power: SMD 17W
 Input Voltage: AC220-240V 50/60Hz
 Luminous Flux: $\geq 1400\text{lm}$
 CR: ≥ 75
 Color Temperature: 6500K/4000K/3000K
 Red/Green/Blue/Yellow/Purple
 Working Temperature: $-10\sim 45^\circ\text{C}$
 Life Span: 30000H
 Material: Plastic
 Product Size: $\Phi 380 \times 50\text{mm}$

V-SD1227RY

27W

Power: SMD 27W
 Input Voltage: AC220-240V 50/60Hz
 Luminous Flux: $\geq 2200\text{lm}$
 CR: ≥ 75
 Color Temperature: 6500K/4000K/3000K
 Red/Green/Blue/Yellow/Purple
 Working Temperature: $-10\sim 45^\circ\text{C}$
 Life Span: 30000H
 Material: Plastic
 Product Size: $\Phi 480 \times 50\text{mm}$

V-SD1115R

15W

Power: SMD 15W
 Input Voltage: AC220-240V 50/60Hz
 Luminous Flux: $\geq 1200\text{lm}$
 CR: ≥ 75
 Color Temperature: 6500K/4000K/3000K
 Working Temperature: $-10\sim 45^\circ\text{C}$
 Life Span: 30000H
 Material: Plastic
 Product Size: $\Phi 380 \times 50\text{mm}$



V-SD1124R

24W

Power: SMD 24W
 Input Voltage: AC220-240V 50/60Hz
 Luminous Flux: $\geq 1900\text{lm}$
 CR: ≥ 75
 Color Temperature: 6500K/4000K/3000K
 Working Temperature: $-10\sim 45^\circ\text{C}$
 Life Span: 30000H
 Material: Plastic
 Product Size: $\Phi 480 \times 50\text{mm}$

V-SD1215R

15W

Power: SMD 15W
 Input Voltage: AC220-240V 50/60Hz
 Luminous Flux: $\geq 1200\text{lm}$
 CR: ≥ 75
 Color Temperature: 6500K/4000K/3000K
 Working Temperature: $-10\sim 45^\circ\text{C}$
 Life Span: 30000H
 Material: Plastic
 Product Size: $\Phi 380 \times 50\text{mm}$

V-SD1224R

24W

Power: SMD 24W
 Input Voltage: AC220-240V 50/60Hz
 Luminous Flux: $\geq 1900\text{lm}$
 CR: ≥ 75
 Color Temperature: 6500K/4000K/3000K
 Working Temperature: $-10\sim 45^\circ\text{C}$
 Life Span: 30000H
 Material: Plastic
 Product Size: $\Phi 480 \times 50\text{mm}$



LED
CeilingLight

LED
CeilingLight



V-SD1436RY

36W

Power: SMD 36W
 Input Voltage: AC220-240V 50/60Hz
 Luminous Flux: $\geq 2900\text{lm}$
 CRI: ≥ 75
 Color Temperature: 6500K/4000K/3000K
 Red/Green/Blue/Yellow/Purple
 Working Temperature: $-10\sim 45^\circ\text{C}$
 Life Span: 30000H
 Material: Plastic
 Product Size: $\Phi 430 \times 90\text{mm}$

V-SD1448RY

48W

Power: SMD 48W
 Input Voltage: AC220-240V 50/60Hz
 Luminous Flux: $\geq 3800\text{lm}$
 CRI: ≥ 75
 Color Temperature: 6500K/4000K/3000K
 Red/Green/Blue/Yellow/Purple
 Working Temperature: $-10\sim 45^\circ\text{C}$
 Life Span: 30000H
 Material: Plastic
 Product Size: $\Phi 500 \times 90\text{mm}$



V-SD0825R

25W

Power: SMD 25W
 Input Voltage: AC220-240V 50/60Hz
 Luminous Flux: $\geq 2000\text{lm}$
 CRI: ≥ 75
 Color Temperature: 6500K/4000K/3000K
 Lamp Edge: White/Silver /Golden
 Working Temperature: $-10\sim 45^\circ\text{C}$
 Life Span: 30000H
 Material: Plastic
 Product Size: $\Phi 495 \times 75\text{mm}$



V-SD1015R

15W

Power: SMD 15W
 Input Voltage: AC220-240V 50/60Hz
 Luminous Flux: $\geq 1000\text{lm}$
 CRI: ≥ 75
 Color Temperature: 6500K/4000K/3000K
 Working Temperature: $-10\sim 45^\circ\text{C}$
 Life Span: 30000H
 Material: Plastic
 Product Size: $\Phi 380 \times 50\text{mm}$

V-SD1024R

24W

Power: SMD 24W
 Input Voltage: AC220-240V 50/60Hz
 Luminous Flux: $\geq 1900\text{lm}$
 CRI: ≥ 75
 Color Temperature: 6500K/4000K/3000K
 Working Temperature: $-10\sim 45^\circ\text{C}$
 Life Span: 30000H
 Material: Plastic
 Product Size: $\Phi 480 \times 50\text{mm}$



LED CeilingLight

LED CeilingLight

13/15/20/24/ **W** **NEW** LED

V-SD1315R

15 **W**

Power: SMD 15W
Input Voltage: AC220-240V 50/60Hz
Luminous Flux: ≥1200lm
CRI: ≥75
Color Temperature: 6500K/4000K/3000K
Working Temperature: -10~45° C
Life Span: 30000H
Material: Plastic
Product Size: Φ380x50mm



V-SD1324R

24 **W**

Power: SMD 24W
Input Voltage: AC220-240V 50/60Hz
Luminous Flux: ≥1900lm
CRI: ≥75
Color Temperature: 6500K/4000K/3000K
Working Temperature: -10~45° C
Life Span: 30000H
Material: Plastic
Product Size: Φ480x50mm



V-SD1513R

13 **W**

Power: SMD 13W
Input Voltage: AC220-240V 50/60Hz
Luminous Flux: ≥1000lm
CRI: ≥75
Color Temperature: 6500K/4000K/3000K
Lamp Edge: Silver /Golden/White
Working Temperature: -10~45° C
Life Span: 30000H
Material: Plastic
Product Size: Φ270x90mm

V-SD1520R

20 **W**

Power: SMD 20W
Input Voltage: AC220-240V 50/60Hz
Luminous Flux: ≥1600lm
CRI: ≥75
Color Temperature: 6500K/4000K/3000K
Lamp Edge: Silver /Golden/White
Working Temperature: -10~45° C
Life Span: 30000H
Material: Plastic
Product Size: Φ320x100mm

LED
**Outdoor
Landscape Light**



Maximize the Value
of Lighting



LED Rechargeable Flood Light

10/12/20/22/30/50 **W** **NEW** **LED**



MD-PT1110 **10W**

Power: COB 10W
 Luminous Flux: ≥800lm
 CRI: ≥80
 Beam Angle: 120°
 Charging Time: >4 Hours
 Working Time: >3.5 Hours
 Color Temperature: 6500K/4000K/3000K
 Surface Color: Red/Green/Yellow
 Working Temperature: -10~50° C
 Life Span: 25000H
 Material: Dia-Cast Aluminium+Glass
 Product Size: 145X165X255mm

MD-PT1120 **20W**

Power: COB 20W
 Luminous Flux: ≥1600lm
 CRI: ≥80
 Beam Angle: 120°
 Charging Time: >2.5 Hours
 Working Time: >2.5 Hours
 Color Temperature: 6500K/4000K/3000K
 Surface Color: Red/Green/Yellow
 Working Temperature: -10~50° C
 Life Span: 25000H
 Material: Dia-Cast Aluminium+Glass
 Product Size: 215X185X290mm



MD-PT1130 **30W**

Power: COB 30W
 Luminous Flux: ≥2400lm
 CRI: ≥80
 Beam Angle: 120°
 Charging Time: >5 Hours
 Working Time: >2 Hours
 Color Temperature: 6500K/4000K/3000K
 Surface Color: Red/Green/Yellow
 Working Temperature: -10~50° C
 Life Span: 25000H
 Material: Dia-Cast Aluminium+Glass
 Product Size: 275X225X335mm



LED Rechargeable Flood Light

LED **NEW** 10/12/20/22/30/50 **W**



MD-PT1150 **50W**

Power: COB 50W
 Luminous Flux: ≥4000lm
 CRI: ≥80
 Beam Angle: 120°
 Charging Time: >6 Hours
 Working Time: >3 Hours
 Color Temperature: 6500K/4000K/3000K
 Surface Color: Red/Green/Yellow
 Working Temperature: -10~50° C
 Life Span: 25000H
 Material: Dia-Cast Aluminium+Glass
 Product Size: 275X225X355mm



MD-PT1212 **12W**

Power: SMD 12W (Warning Function)
 Luminous Flux: ≥800lm
 CRI: ≥80
 Beam Angle: 120°
 Charging Time: >3 Hours
 Working Time: >2 Hours
 Color Temperature: 6500K/4000K/3000K
 Surface Color: Red/Green/Yellow
 Working Temperature: -10~50° C
 Life Span: 25000H
 Material: Dia-Cast Aluminium+Glass
 Product Size: 145X165X255mm



MD-PT1222 **22W**

Power: SMD 22W (Warning Function)
 Luminous Flux: ≥1600lm
 CRI: ≥80
 Beam Angle: 120°
 Charging Time: >4 Hours
 Working Time: >2 Hours
 Color Temperature: 6500K/4000K/3000K
 Surface Color: Red/Green/Yellow
 Working Temperature: -10~50° C
 Life Span: 25000H
 Material: Dia-Cast Aluminium+Glass
 Product Size: 215X185X290mm



LED Outdoor Landscape Light

LED Outdoor Landscape Light

LED Integrated Flood Light

10/20/30/50/70/100 **W** LED

V-P0110 **10W**

Power: COB 10W
 Input Voltage: AC100-240V 50/60Hz
 Luminous Flux: $\geq 900\text{lm}$
 CRI: ≥ 70
 Beam Angle: 120°
 Color Temperature: 6500K/4000K/3000K
 RED/GREEN/BLUE/RGB
 Working Temperature: -10~50° C
 Life Span: 30000H
 Material: Dia-Cast Aluminium+Glass
 Product Size: 115x85x85mm

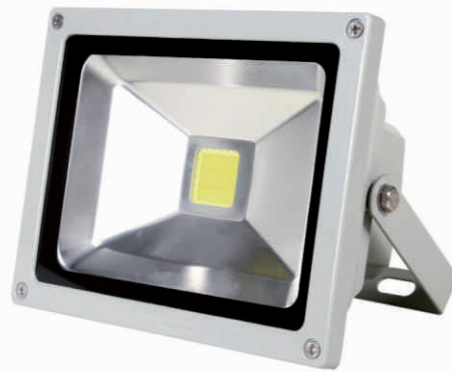


LED Integrated Flood Light

LED 10/20/30/50/70/100 **W**

V-P0150 **50W**

Power: COB 50W
 Input Voltage: AC100-240V 50/60Hz
 Luminous Flux: $\geq 4500\text{lm}$
 CRI: ≥ 70
 Beam Angle: 120°
 Color Temperature: 6500K/4000K/3000K
 RED/GREEN/BLUE/RGB
 Working Temperature: -10~50° C
 Life Span: 30000H
 Material: Dia-Cast Aluminium+Glass
 Product Size: 285x235x180mm



V-P0120 **20W**

Power: COB 20W
 Input Voltage: AC100-240V 50/60Hz
 Luminous Flux: $\geq 1800\text{lm}$
 CRI: ≥ 70
 Beam Angle: 120°
 Color Temperature: 6500K/4000K/3000K
 RED/GREEN/BLUE/RGB
 Working Temperature: -10~50° C
 Life Span: 30000H
 Material: Dia-Cast Aluminium+Glass
 Product Size: 180x140x130mm



V-P0170 **70W**

Power: COB 70W
 Input Voltage: AC100-240V 50/60Hz
 Luminous Flux: $\geq 5600\text{lm}$
 CRI: ≥ 70
 Beam Angle: 120°
 Color Temperature: 6500K/4000K/3000K
 RED/GREEN/BLUE/RGB
 Working Temperature: -10~50° C
 Life Span: 30000H
 Material: Dia-Cast Aluminium+Glass
 Product Size: 360x285x120mm

V-P0130 **30W**

Power: COB 30W
 Input Voltage: AC100-240V 50/60Hz
 Luminous Flux: $\geq 2700\text{lm}$
 CRI: ≥ 70
 Beam Angle: 120°
 Color Temperature: 6500K/4000K/3000K
 RED/GREEN/BLUE/RGB
 Working Temperature: -10~50° C
 Life Span: 30000H
 Material: Dia-Cast Aluminium+Glass
 Product Size: 225x185x125mm



V-P01100 **100W**

Power: COB 100W
 Input Voltage: AC100-240V 50/60Hz
 Luminous Flux: $\geq 7500\text{lm}$
 CRI: ≥ 70
 Beam Angle: 120°
 Color Temperature: 6500K/4000K/3000K
 RED/GREEN/BLUE/RGB
 Working Temperature: -10~50° C
 Life Span: 30000H
 Material: Dia-Cast Aluminium+Glass
 Product Size: 360x285x120mm



Outdoor Landscape Light

Outdoor Landscape Light

LED Plastic Flood Light

10/30/50W NEW LED



MD-P0510S 10W

Power: COB 10W
 Input Voltage: AC220-240V 50/60Hz
 Luminous Flux: $\geq 800\text{lm}$
 CRI: ≥ 70
 Beam Angle: 120°
 Color Temperature: 6500K/4000K/3000K
 Working Temperature: -10~50° C
 Life Span: 25000H
 Material: Dia-Cast Aluminium+PC
 Product Size: 180x127x45mm

MD-P0530S 30W

Power: COB 30W
 Input Voltage: AC220-240V 50/60Hz
 Luminous Flux: $\geq 2400\text{lm}$
 CRI: ≥ 70
 Beam Angle: 120°
 Color Temperature: 6500K/4000K/3000K
 Working Temperature: -10~50° C
 Life Span: 25000H
 Material: Dia-Cast Aluminium+PC
 Product Size: 224x246x60mm



MD-P0550S 50W

Power: COB 50W
 Input Voltage: AC220-240V 50/60Hz
 Luminous Flux: $\geq 4000\text{lm}$
 CRI: ≥ 70
 Beam Angle: 120°
 Color Temperature: 6500K/4000K/3000K
 Working Temperature: -10~50° C
 Life Span: 25000H
 Material: Dia-Cast Aluminium+PC
 Product Size: 284x234x91mm



LED Integrated Flood Light

LED 10/20/30/50W



MD-P0110B 10W

Power: COB 10W
 Input Voltage: AC220-240V 50/60Hz
 Luminous Flux: $\geq 700\text{lm}$
 CRI: ≥ 70
 Beam Angle: 120°
 Color Temperature: 6500K/4000K/3000K
 RED/GREEN/BLUE/RGB
 Working Temperature: -10~50° C
 Life Span: 25000H
 Material: Dia-Cast Aluminium+Glass
 Product Size: 125x125x110mm

MD-P0120B 20W

Power: COB 20W
 Input Voltage: AC220-240V 50/60Hz
 Luminous Flux: $\geq 1400\text{lm}$
 CRI: ≥ 70
 Beam Angle: 120°
 Color Temperature: 6500K/4000K/3000K
 RED/GREEN/BLUE/RGB
 Working Temperature: -10~50° C
 Life Span: 25000H
 Material: Dia-Cast Aluminium+Glass
 Product Size: 182x182x130mm

MD-P0130B 30W

Power: COB 30W
 Input Voltage: AC220-240V 50/60Hz
 Luminous Flux: $\geq 2000\text{lm}$
 CRI: ≥ 70
 Beam Angle: 120°
 Color Temperature: 6500K/4000K/3000K
 RED/GREEN/BLUE/RGB
 Working Temperature: -10~50° C
 Life Span: 25000H
 Material: Dia-Cast Aluminium+Glass
 Product Size: 228x228x175mm

MD-P0150B 50W

Power: COB 50W
 Input Voltage: AC220-240V 50/60Hz
 Luminous Flux: $\geq 3000\text{lm}$
 CRI: ≥ 70
 Beam Angle: 120°
 Color Temperature: 6500K/4000K/3000K
 RED/GREEN/BLUE/RGB
 Working Temperature: -10~50° C
 Life Span: 25000H
 Material: Dia-Cast Aluminium+Glass
 Product Size: 290x290x220mm



LED Outdoor Landscape Light

LED Outdoor Landscape Light

High Power Flood Light

3/5/6/9/12/15 **W** LED

High Power Flood Light

LED 3/5/6/9/12/15 **W**

V-P02031 **3W**

Power: High Power 3x1W
 Input Voltage: AC100-240V 50/60Hz
 Luminous Flux: $\geq 240\text{lm}$
 CRI: ≥ 70
 Beam Angle: 24°
 Color Temperature: 6500K/4000K/3000K
 RED/GREEN/BLUE/RGB
 Working Temperature: -10-50° C
 Life Span: 30000H
 Material: Dia-Cast Aluminium+Glass
 Product Size: $\Phi 75 \times 80\text{mm}$



V-P02091 **9W**

Power: High Power 9x1W
 Input Voltage: AC100-240V 50/60Hz
 Luminous Flux: $\geq 720\text{lm}$
 CRI: ≥ 70
 Beam Angle: 24°
 Color Temperature: 6500K/4000K/3000K
 RED/GREEN/BLUE
 Working Temperature: -10-50° C
 Life Span: 30000H
 Material: Dia-Cast Aluminium+Glass
 Product Size: $\Phi 145 \times 150\text{mm}$



V-P02051 **5W**

Power: High Power 5x1W
 Input Voltage: AC100-240V 50/60Hz
 Luminous Flux: $\geq 400\text{lm}$
 CRI: ≥ 70
 Beam Angle: 24°
 Color Temperature: 6500K/4000K/3000K
 RED/GREEN/BLUE
 Working Temperature: -10-50° C
 Life Span: 30000H
 Material: Dia-Cast Aluminium+Glass
 Product Size: $\Phi 95 \times 100\text{mm}$



V-P020121 **12W**

Power: High Power 12x1W
 Input Voltage: AC100-240V 50/60Hz
 Luminous Flux: $\geq 900\text{lm}$
 CRI: ≥ 70
 Beam Angle: 24°
 Color Temperature: 6500K/4000K/3000K
 RED/GREEN/BLUE
 Working Temperature: -10-50° C
 Life Span: 30000H
 Material: Dia-Cast Aluminium+Glass
 Product Size: $\Phi 165 \times 170\text{mm}$



V-P02061-RGB **6W**

Power: High Power 6x1W
 Input Voltage: AC100-240V 50/60Hz
 Luminous Flux: $\geq 400\text{lm}$
 CRI: ≥ 70
 Beam Angle: 24°
 Color Temperature: RGB
 Working Temperature: -10-50° C
 Life Span: 30000H
 Material: Dia-Cast Aluminium+Glass
 Product Size: $\Phi 95 \times 100\text{mm}$



V-P020151 **15W**

Power: High Power 15x1W
 Input Voltage: AC100-240V 50/60Hz
 Luminous Flux: $\geq 1200\text{lm}$
 CRI: ≥ 70
 Beam Angle: 24°
 Color Temperature: 6500K/4000K/3000K
 RED/GREEN/BLUE
 Working Temperature: -10-50° C
 Life Span: 30000H
 Material: Dia-Cast Aluminium+Glass
 Product Size: $\Phi 165 \times 170\text{mm}$



Outdoor Landscape Light

Outdoor Landscape Light

LED Underground Light

1/3/6/9/12/15/18 **W** LED



V-B0101 **1W**

Power: High Power 1x1W
 Input Voltage: AC100-240V 50/60Hz
 Luminous Flux: $\geq 90\text{lm}$
 CRI: ≥ 70
 Beam Angle: 30°
 Color Temperature: 6500K/4000K/3000K
 RED/GREEN/BLUE/RGB
 Working Temperature: -10~50° C
 Life Span: 30000H
 Material: Dia-Cast Aluminium+ABC+Glass
 Product Size: $\Phi 65 \times 80\text{mm}$

V-B0103 **3W**

Power: High Power 3x1W
 Input Voltage: AC100-240V 50/60Hz
 Luminous Flux: $\geq 260\text{lm}$
 CRI: ≥ 70
 Beam Angle: 30°
 Color Temperature: 6500K/4000K/3000K
 RED/GREEN/BLUE/RGB
 Working Temperature: -10~50° C
 Life Span: 30000H
 Material: Dia-Cast Aluminium+ABC+Glass
 Product Size: $\Phi 100 \times 90\text{mm}$

V-B0106 **6W**

Power: High Power 6x1W
 Input Voltage: AC100-240V 50/60Hz
 Luminous Flux: $\geq 420\text{lm}$
 CRI: ≥ 70
 Beam Angle: 30°
 Color Temperature: 6500K/4000K/3000K
 RED/GREEN/BLUE/RGB
 Working Temperature: -10~50° C
 Life Span: 30000H
 Material: Dia-Cast Aluminium+ABC+Glass
 Product Size: $\Phi 120 \times 100\text{mm}$

V-B0109 **9W**

Power: High Power 9x1W
 Input Voltage: AC100-240V 50/60Hz
 Luminous Flux: $\geq 720\text{lm}$
 CRI: ≥ 70
 Beam Angle: 30°
 Color Temperature: 6500K/4000K/3000K
 RED/GREEN/BLUE/RGB
 Working Temperature: -10~50° C
 Life Span: 30000H
 Material: Dia-Cast Aluminium+ABC+Glass
 Product Size: $\Phi 150 \times 110\text{mm}$

LED Underground Light

LED 1/3/6/9/12/15/18 **W**

V-B01012 **12W**

Power: High Power 12x1W
 Input Voltage: AC100-240V 50/60Hz
 Luminous Flux: $\geq 900\text{lm}$
 CRI: ≥ 70
 Beam Angle: 30°
 Color Temperature: 6500K/4000K/3000K
 RED/GREEN/BLUE/RGB
 Working Temperature: -10~50° C
 Life Span: 30000H
 Material: Dia-Cast Aluminium+ABC+Glass
 Product Size: $\Phi 180 \times 115\text{mm}$



V-B01015 **15W**

Power: High Power 15x1W
 Input Voltage: AC100-240V 50/60Hz
 Luminous Flux: $\geq 1300\text{lm}$
 CRI: ≥ 70
 Beam Angle: 30°
 Color Temperature: 6500K/4000K/3000K
 RED/GREEN/BLUE/RGB
 Working Temperature: -10~50° C
 Life Span: 30000H
 Material: Dia-Cast Aluminium+ABC+Glass
 Product Size: $\Phi 200 \times 95\text{mm}$

V-B01018 **18W**

Power: High Power 18x1W
 Input Voltage: AC100-240V 50/60Hz
 Luminous Flux: $\geq 1500\text{lm}$
 CRI: ≥ 70
 Beam Angle: 30°
 Color Temperature: 6500K/4000K/3000K
 RED/GREEN/BLUE/RGB
 Working Temperature: -10~50° C
 Life Span: 30000H
 Material: Dia-Cast Aluminium+ABC+Glass
 Product Size: $\Phi 220 \times 95\text{mm}$



LED Outdoor Landscape Light

LED Outdoor Landscape Light

LED Spike Light

3/5/3x3RGB/12W LED



MD-IL0103R 3W

Power: High Power 3x1W
 Input Voltage: AC100-240V 50/60Hz
 Luminous Flux: ≥260lm
 CRI: ≥70
 Beam Angle: 30°
 Color Temperature: 6500K/4000K/3000K
 RED/GREEN/BLUE/RGB
 Working Temperature: -10~50° C
 Life Span: 25000H
 Material: Dia-Cast Aluminium+Glass
 Product Size: Φ43x260mm

MD-IL0205R 5W

Power: COB 5W
 Input Voltage: AC100-240V 50/60Hz
 Luminous Flux: ≥420lm
 CRI: ≥70
 Beam Angle: 30°
 Color Temperature: 6500K/4000K/3000K
 RED/GREEN/BLUE/RGB
 Working Temperature: -10~50° C
 Life Span: 25000H
 Material: Dia-Cast Aluminium+Glass
 Product Size: Φ72x370mm

MD-IL0309R 3x3W

Power: High Power 3x3W
 Input Voltage: AC100-240V 50/60Hz
 Luminous Flux: ≥260lm
 CRI: ≥70
 Beam Angle: 30°
 Color Temperature: RGB
 Working Temperature: -10~50° C
 Life Span: 25000H
 Material: Dia-Cast Aluminium+Glass
 Product Size: Φ105x380mm

MD-IL0305R 5W

Power: High Power 5x1W
 Input Voltage: AC100-240V 50/60Hz
 Luminous Flux: ≥420lm
 CRI: ≥70
 Beam Angle: 30°
 Color Temperature: 6500K/4000K/3000K
 RED/GREEN/BLUE
 Working Temperature: -10~50° C
 Life Span: 25000H
 Material: Dia-Cast Aluminium+Glass
 Product Size: Φ105x380mm

MD-IL0412R 12W

Power: High Power 12x1W
 Input Voltage: AC100-240V 50/60Hz
 Luminous Flux: ≥820lm
 CRI: ≥70
 Beam Angle: 30°
 Color Temperature: 6500K/4000K/3000K
 RED/GREEN/BLUE/RGB
 Working Temperature: -10~50° C
 Life Span: 25000H
 Material: Dia-Cast Aluminium+Glass
 Product Size: Φ160x390mm

LED STREET LIGHT

LED 24/36/50W

V-SL0124L 24W

Power: 24x1W
 Input Voltage: AC100-240V 50/60Hz
 Luminous Flux: ≥1900lm
 CRI: ≥70
 Beam Angle: 120°
 Color Temperature: 6500K/4000K/3000K
 Working Temperature: -10~50° C
 Life Span: 30000H
 Material: Dia-Cast Aluminium+Glass
 Product Size: 380x150x60mm



V-SL0136L 36W

Power: 36x1W
 Input Voltage: AC100-240V 50/60Hz
 Luminous Flux: ≥2900lm
 CRI: ≥70
 Beam Angle: 120°
 Color Temperature: 6500K/4000K/3000K
 Working Temperature: -10~50° C
 Life Span: 30000H
 Material: Dia-Cast Aluminium+Glass
 Product Size: 470x206x60mm

V-SL0150L 50W

Power: 50x1W
 Input Voltage: AC100-240V 50/60Hz
 Luminous Flux: ≥4000lm
 CRI: ≥70
 Beam Angle: 120°
 Color Temperature: 6500K/4000K/3000K
 Working Temperature: -10~50° C
 Life Span: 30000H
 Material: Dia-Cast Aluminium+Glass
 Product Size: 470x206x60mm



LED Outdoor Landscape Light

LED Outdoor Landscape Light

LED Lawn Light



V-C0109C 9W

Power: SMD 9W
 Input Voltage: AC100-240V 50/60Hz
 CRI: ≥70
 Beam Angle: 120°
 Color Temperature: 6500K/4000K/3000K
 Working Temperature: -10-50° C
 Life Span: 30000H
 Material: Dia-Cast Aluminium
 Product Size: Φ158x600mm

V-C0209C 9W

Power: SMD 9W
 Input Voltage: AC100-240V 50/60Hz
 CRI: ≥70
 Beam Angle: 120°
 Color Temperature: 6500K/4000K/3000K
 Working Temperature: -10-50° C
 Life Span: 30000H
 Material: Dia-Cast Aluminium
 Product Size: Φ210x300mm

V-C0409C 9W

Power: SMD 9W
 Input Voltage: AC100-240V 50/60Hz
 CRI: ≥70
 Beam Angle: 120°
 Color Temperature: 6500K/4000K/3000K
 Working Temperature: -10-50° C
 Life Span: 30000H
 Material: Dia-Cast Aluminium
 Product Size: Φ210x800mm

V-C0506L 6W

Power: High Power 6x1W
 Input Voltage: AC100-240V 50/60Hz
 CRI: ≥70
 Beam Angle: 120°
 Color Temperature: 6500K/4000K/3000K
 Working Temperature: -10-50° C
 Life Span: 30000H
 Material: Dia-Cast Aluminium
 Product Size: 190x95x720mm



LED Emergency Light



Maximize the Value of Lighting



LED Emergency Light

2/4/5/6/12/18 **W** LED



V-ELM0205L **5W**

Power: 5W
 Input Voltage: AC220-240V 50/60Hz
 Emergency Time: 8hours
 Beam Angle: 120°
 Color Temperature: 6500K/4000K/3000K
 Working Temperature: -10~45° C
 Life Span: 30000H
 Material: Dia-Cast Aluminium+PMMA
 Product Size: 300x90x325mm

LED Emergency Light

LED 2/4/5/6/12/18 **W**

V-ELM0705L **5W**

Power: 5W
 Input Voltage: AC220-240V 50/60Hz
 Emergency Time: 90mins
 Beam Angle: 120°
 Color Temperature: Green
 Working Temperature: -10~45° C
 Life Span: 30000H
 Material: Dia-Cast Aluminium+PMMA
 Product Size: 360x323x32mm



V-ELM0905L **5W**

Power: 5W
 Input Voltage: AC220-240V 50/60Hz
 Emergency Time: 90mins
 Beam Angle: 120°
 Color Temperature: Green
 Working Temperature: -10~45° C
 Life Span: 30000H
 Material: Dia-Cast Aluminium+PMMA
 Product Size: 377x160x8mm



V-ELB1002L **2W**

Power: 2W
 Input Voltage: AC220-240V 50/60Hz
 Emergency Time: 90mins
 Beam Angle: 120°
 Color Temperature: Green
 Working Temperature: -10~45° C
 Life Span: 30000H
 Material: Dia-Cast Aluminium+PMMA
 Product Size: 300x180x36mm



V-ELM0305L **5W**

Power: 5W
 Input Voltage: AC220-240V 50/60Hz
 Emergency Time: 90mins
 Beam Angle: 120°
 Color Temperature: 6500K/4000K/3000K
 Working Temperature: -10~45° C
 Life Span: 30000H
 Material: Dia-Cast Aluminium+PMMA
 Product Size: 270x50x250mm



V-ELM0612L **12W**

Power: 12W
 Input Voltage: AC220-240V 50/60Hz
 Emergency Time: 90mins
 Beam Angle: 120°
 Color Temperature: 6500K/3000K/Green
 Working Temperature: -10~45° C
 Life Span: 30000H
 Material: Dia-Cast Aluminium+PMMA
 Product Size: 340x54x272mm



LED
Emergency
Light

LED
Emergency
Light

LED Emergency Light

2/4/5/6/12/18 **W** LED

LED Emergency Light

LED 2/4/5/6/12/18 **W**

V-ELB1102R **2W**

Power: 2W
Input Voltage: AC220-240V 50/60Hz
Emergency Time: 90mins
Beam Angle: 120°
Color Temperature: Green
Working Temperature: -10~45° C
Life Span: 30000H
Material: Dia-Cast Aluminium+PMMA
Product Size: Φ 157x30mm

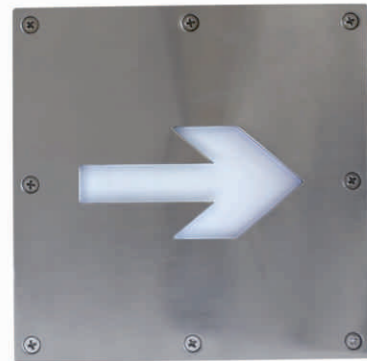


V-ELB1402R **2W**

Power: 2W
Input Voltage: AC220-240V 50/60Hz
Emergency Time: 90mins
Beam Angle: 120°
Color Temperature: Green
Working Temperature: -10~45° C
Life Span: 30000H
Material: Dia-Cast Aluminium+PMMA
Product Size: Φ 157x30mm



LED
Emergency
Light



V-ELB1202S **2W**

Power: 2W
Input Voltage: AC220-240V 50/60Hz
Emergency Time: 90mins
Beam Angle: 120°
Color Temperature: Green
Working Temperature: -10~45° C
Life Span: 30000H
Material: Dia-Cast Aluminium+PMMA
Product Size: 158x158x30mm



V-ELM1505L **5W**

Power: 5W
Input Voltage: AC220-240V 50/60Hz
Emergency Time: 90mins
Beam Angle: 120°
Color Temperature: 6500K/4000K/3000K
Working Temperature: -10~45° C
Life Span: 30000H
Material: Dia-Cast Aluminium+PMMA
Product Size: 350x115x70mm

LED
Emergency
Light

V-ELB1302R **2W**

Power: 2W
Input Voltage: AC220-240V 50/60Hz
Emergency Time: 90mins
Beam Angle: 120°
Color Temperature: Green
Working Temperature: -10~45° C
Life Span: 30000H
Material: Dia-Cast Aluminium+PMMA
Product Size: Φ 245x37mm



V-ELM1618R **18W**

Power: 18W
Input Voltage: AC220-240V 50/60Hz
Emergency Time: 90mins
Beam Angle: 120°
Color Temperature: 6500K/4000K/3000K
Working Temperature: -10~45° C
Life Span: 30000H
Material: Dia-Cast Aluminium+PMMA
Product Size: Φ 300x40mm



LED Emergency Light



MD-ELM0105L 5W

Power: 5W
 Input Voltage: AC220-240V 50/60Hz
 Emergency Time: 90mins
 Beam Angle: 120°
 Color Temperature: 6500K/4000K/3000K
 Working Temperature: -10~45° C
 Life Span: 25000H
 Material: Dia-Cast Aluminium++PMMA
 Product Size: 270x45x240mm



MD-ELM0404L 4W

Power: 4W
 Input Voltage: AC220-240V 50/60Hz
 Emergency Time: 90mins
 Beam Angle: 120°
 Color Temperature: Green
 Working Temperature: -10~45° C
 Life Span: 25000H
 Material: Dia-Cast Aluminium+PMMA
 Product Size: 342x157x23mm

MD-ELM0506L 6W

Power: 6W
 Input Voltage: AC220-240V 50/60Hz
 Emergency Time: 90mins
 Beam Angle: 120°
 Color Temperature: 6500K/3000K/Green
 Working Temperature: -10~45° C
 Life Span: 25000H
 Material: Dia-Cast Aluminium++PMMA
 Product Size: 320x236x38mm

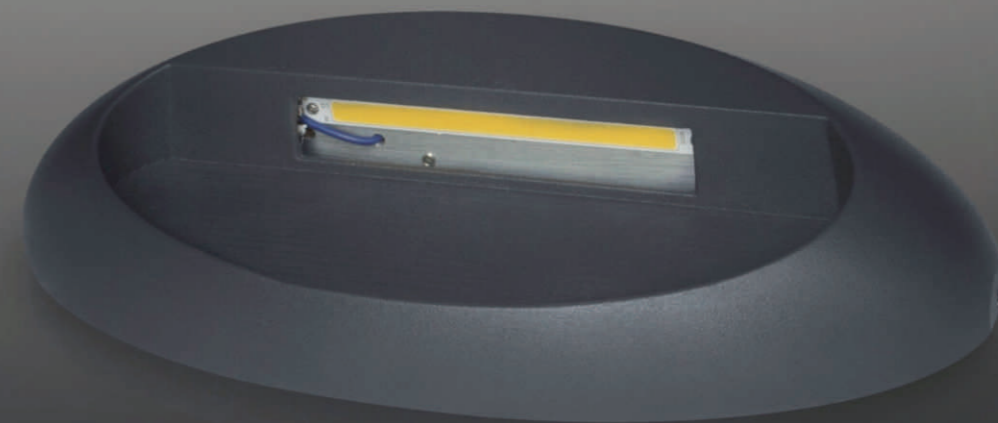
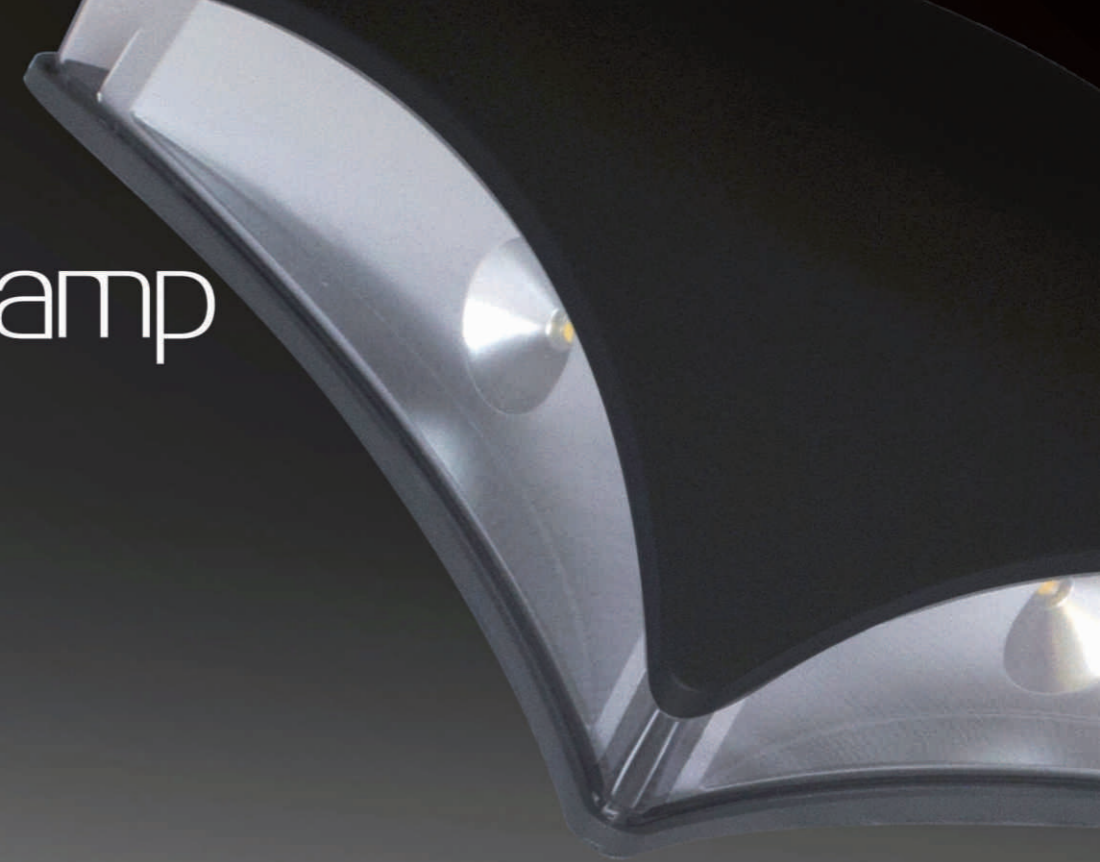


MD-ELM0804L 4W

Power: 4W
 Input Voltage: AC220-240V 50/60Hz
 Emergency Time: 90mins
 Beam Angle: 120°
 Color Temperature: Green
 Working Temperature: -10~45° C
 Life Span: 25000H
 Material: Dia-Cast Aluminium+PMMA
 Product Size: 375x160x14mm



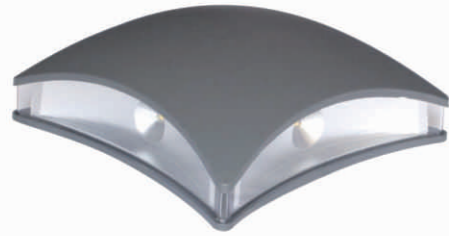
LED Wall lamp



Maximize the Value
of Lighting

LED
Emergency
Light





V-WL1204S 4W

Power: 4x1W
 Input Voltage: AC100-240V 50/60Hz
 CRI: ≥70
 Color Temperature: 6500K/3000K
 Working Temperature: -10-45° C
 Life Span: 30000H
 Material: Dia-Cast Aluminium
 Product Size: 205x205x73mm



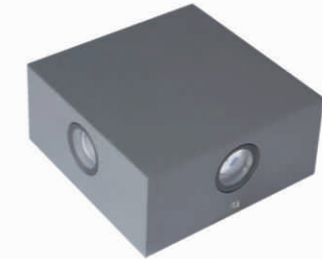
V-WL1406L 6W

Power: 2x3W
 Input Voltage: AC100-240V 50/60Hz
 CRI: ≥70
 Color Temperature: 6500K/3000K
 Working Temperature: -10-45° C
 Life Span: 30000H
 Material: Dia-Cast Aluminium
 Product Size: 90x93x205mm



V-WL1702L 2W

Power: 2x1W
 Input Voltage: AC100-240V 50/60Hz
 CRI: ≥70
 Color Temperature: 6500K/3000K
 Working Temperature: -10-45° C
 Life Span: 30000H
 Material: Dia-Cast Aluminium
 Product Size: 103x64x36mm



V-WL1804S 4W

Power: 4x1W
 Input Voltage: AC100-240V 50/60Hz
 CRI: ≥70
 Color Temperature: 6500K/3000K
 Working Temperature: -10-45° C
 Life Span: 30000H
 Material: Dia-Cast Aluminium
 Product Size: 107x107x60mm



V-WL1502L 2W

Power: 2x1W
 Input Voltage: AC100-240V 50/60Hz
 CRI: ≥70
 Color Temperature: 6500K/3000K
 Working Temperature: -10-45° C
 Life Span: 30000H
 Material: Dia-Cast Aluminium
 Product Size: 84x47x170mm



V-WL1602L 2W

Power: 2x1W
 Input Voltage: AC100-240V 50/60Hz
 CRI: ≥70
 Color Temperature: 6500K/3000K
 Working Temperature: -10-45° C
 Life Span: 30000H
 Material: Dia-Cast Aluminium
 Product Size: 103x64x36mm



V-WL1906O 6W

Power: High Power 6x1W
 Input Voltage: AC100-240V 50/60Hz
 CRI: ≥70
 Color Temperature: 6500K/3000K
 Working Temperature: -10-45° C
 Life Span: 30000H
 Material: Dia-Cast Aluminium
 Product Size: 190x95x72mm



V-WL2005S 5W

Power: SMD 5W
 Input Voltage: AC100-240V 50/60Hz
 CRI: ≥70
 Color Temperature: 6500K/3000K
 Working Temperature: -10-45° C
 Life Span: 30000H
 Material: Dia-Cast Aluminium
 Product Size: 145x100x65mm



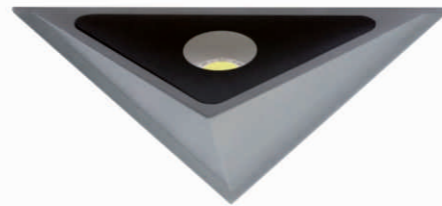
LED
Wall lamp

LED
Wall lamp



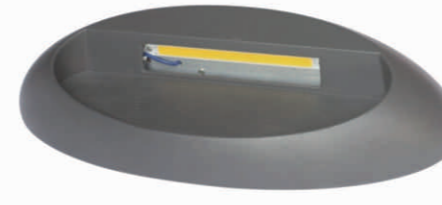
V-WL23030 **3W**

Power: COB 3W
 Input Voltage: AC100-240V 50/60Hz
 CRi: ≥70
 Color Temperature: 6500K/3000K
 Working Temperature: -10~45° C
 Life Span: 30000H
 Material: Dia-Cast Aluminium
 Product Size: 166x86x76mm



V-WL2403T **3W**

Power: COB 3W
 Input Voltage: AC100-240V 50/60Hz
 CRi: ≥70
 Color Temperature: 6500K/3000K
 Working Temperature: -10~45° C
 Life Span: 30000H
 Material: Dia-Cast Aluminium
 Product Size: 153x113x126mm



V-WL2703E **3W**

Power: COB 3W
 Input Voltage: AC100-240V 50/60Hz
 CRi: ≥70
 Color Temperature: 6500K/3000K
 Working Temperature: -10~45° C
 Life Span: 30000H
 Material: Dia-Cast Aluminium
 Product Size: 266x130x54mm



V-WL3006L **6W**

Power: 2xCOB 3W
 Input Voltage: AC100-240V 50/60Hz
 CRi: ≥70
 Color Temperature: 6500K/3000K
 Working Temperature: -10~45° C
 Life Span: 30000H
 Material: Dia-Cast Aluminium
 Product Size: 88x77x124mm



V-WL2503A **3W**

Power: COB 3W
 Input Voltage: AC100-240V 50/60Hz
 CRi: ≥70
 Color Temperature: 6500K/3000K
 Working Temperature: -10~45° C
 Life Span: 30000H
 Material: Dia-Cast Aluminium
 Product Size: 164x80x82mm



V-WL2603E **3W**

Power: COB 3W
 Input Voltage: AC100-240V 50/60Hz
 CRi: ≥70
 Color Temperature: 6500K/3000K
 Working Temperature: -10~45° C
 Life Span: 30000H
 Material: Dia-Cast Aluminium
 Product Size: 130x270x54mm



V-WL3105S **5W**

Power: COB 5W
 Input Voltage: AC100-240V 50/60Hz
 CRi: ≥70
 Color Temperature: 6500K/3000K
 Working Temperature: -10~45° C
 Life Span: 30000H
 Material: Dia-Cast Aluminium
 Product Size: 95x91x95mm



V-WL3203C **3W**

Power: COB 3W
 Input Voltage: AC100-240V 50/60Hz
 CRi: ≥70
 Color Temperature: 6500K/3000K
 Working Temperature: -10~45° C
 Life Span: 30000H
 Material: Dia-Cast Aluminium
 Product Size: 170x125x72mm





V-WL3206C 6W

Power: 2xCOB 3W
 Input Voltage: AC100-240V 50/60Hz
 CRi: ≥70
 Color Temperature: 6500K/3000K
 Working Temperature: -10~45° C
 Life Span: 30000H
 Material: Dia-Cast Aluminium
 Product Size: 170x125x72mm



V-WL3303S 3W

Power: COB 3W
 Input Voltage: AC100-240V 50/60Hz
 CRi: ≥70
 Color Temperature: 6500K/3000K
 Working Temperature: -10~45° C
 Life Span: 30000H
 Material: Dia-Cast Aluminium
 Product Size: 81x68x92mm



V-WL3303C 3W

Power: COB 3W
 Input Voltage: AC100-240V 50/60Hz
 CRi: ≥70
 Color Temperature: 6500K/3000K
 Working Temperature: -10~45° C
 Life Span: 30000H
 Material: Dia-Cast Aluminium
 Product Size: 81x68x92mm



V-WL3406C 6W

Power: 2xCOB 3W
 Input Voltage: AC100-240V 50/60Hz
 CRi: ≥70
 Color Temperature: 6500K/3000K
 Working Temperature: -10~45° C
 Life Span: 30000H
 Material: Dia-Cast Aluminium
 Product Size: 150x68x92mm



V-WL3503R 3W

Power: COB 3W
 Input Voltage: AC220-240V 50/60Hz
 Luminous Flux: ≥210lm
 CRi: ≥80
 Color Temperature: 6500K/4000K/3000K
 Working Temperature: -10~45° C
 Life Span: 30000H
 Material: Dia-Cast Aluminium

V-WL3509R 9W

Power: COB 9W
 Input Voltage: AC220-240V 50/60Hz
 Luminous Flux: ≥720lm
 CRi: ≥80
 Color Temperature: 6500K/4000K/3000K
 Working Temperature: -10~45° C
 Life Span: 30000H
 Material: Dia-Cast Aluminium

V-WL35209L 18W

Power: COB 2x9W
 Input Voltage: AC220-240V 50/60Hz
 Luminous Flux: ≥1400lm
 CRi: ≥80
 Color Temperature: 6500K/4000K/3000K
 Working Temperature: -10~45° C
 Life Span: 30000H
 Material: Dia-Cast Aluminium



LED
Wall lamp

LED
Wall lamp



V-WL3605R

5W

Power: COB 5W
 Input Voltage: AC220-240V 50/60Hz
 Luminous Flux: ≥400lm
 CRI: ≥80
 Color Temperature: 6500K/4000K/3000K
 Working Temperature: -10~45° C
 Life Span: 30000H
 Material: Dia-Cast Aluminium



V-WL36205L

10W

Power: COB 2x5W
 Input Voltage: AC220-240V 50/60Hz
 Luminous Flux: ≥800lm
 CRI: ≥80
 Color Temperature: 6500K/4000K/3000K
 Working Temperature: -10~45° C
 Life Span: 30000H
 Material: Dia-Cast Aluminium



V-WL3705R

5W

Power: COB 5W
 Input Voltage: AC220-240V 50/60Hz
 Luminous Flux: ≥400lm
 CRI: ≥80
 Color Temperature: 6500K/4000K/3000K
 Working Temperature: -10~45° C
 Life Span: 30000H
 Material: Dia-Cast Aluminium

LED
Strip Light
and spare parts



Maximize the Value
of Lighting



220V Distinctive LED Strip Light

SMD/COB NEW LED



VMAX 220V WB-SMD-72-IP44

Power: SMD 8W/m
 Input Voltage: AC220-240V 50/60Hz
 Plate Sizes: 10mm
 Luminous Flux: $\geq 680\text{lm/m}$
 CRI: ≥ 80
 Beam Angle: 120°
 Color Temperature: 6500K/4000K/3000K
 RED/GREEN/BLUE/RGB
 Working Temperature: -10~45° C
 Life Span: 30000H
 Manner Of Packing: 50/m

VMAX 220V WB-SMD-2835-2*90-IP44

Power: SMD 8W/m
 Input Voltage: AC220-240V 50/60Hz
 Plate Sizes: 12mm
 Luminous Flux: $\geq 720\text{lm/m}$
 CRI: ≥ 80
 Beam Angle: 120°
 Color Temperature: 6500K/4000K/3000K
 RED/GREEN/BLUE/RGB
 Working Temperature: -10~45° C
 Life Span: 30000H
 Manner Of Packing: 50/m

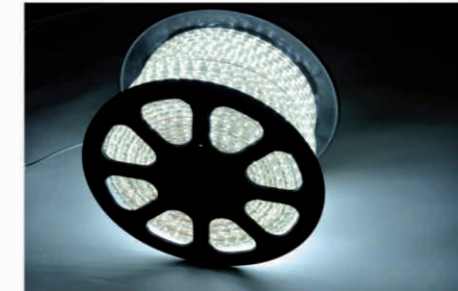
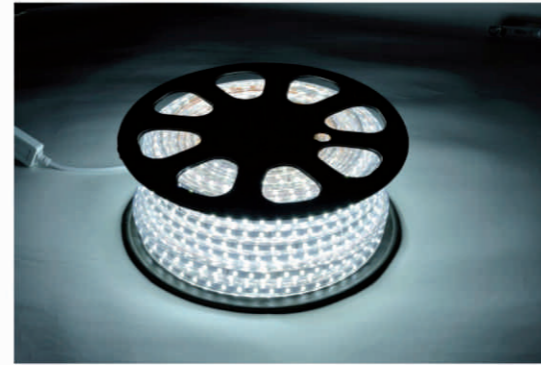
VMAX 220V COB 6565-72-IP44

Power: COB 15W/m
 Input Voltage: AC220-240V 50/60Hz
 Plate Sizes: 10mm
 Luminous Flux: $\geq 1200\text{lm/m}$
 CRI: ≥ 80
 Beam Angle: 140°
 Color Temperature: 6500K/4000K/3000K
 RED/GREEN/BLUE/RGB
 Working Temperature: -10~45° C
 Life Span: 30000H
 Manner Of Packing: 30/m



COLORFUL CHANGE LED 220V Strip Light

LED NEW 2835/3528/5050 SMD



VMAX 220V SMD-72-IP44

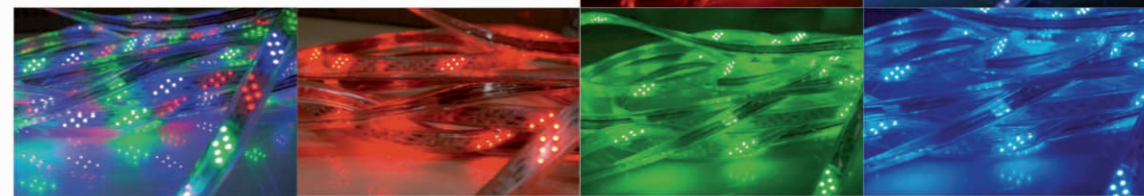
Power: SMD 8W/m
 Input Voltage: AC220-240V 50/60Hz
 Plate Sizes: 10mm
 Luminous Flux: $\geq 680\text{lm/m}$
 CRI: ≥ 80
 Beam Angle: 120°
 Color Temperature: 6500K/4000K/3000K
 RED/GREEN/BLUE/RGB
 Working Temperature: -10~45° C
 Life Span: 30000H
 Manner Of Packing: 50m/Roll

VMAX 220V SMD-2835-2*90-IP44

Power: SMD 8W/m
 Input Voltage: AC220-240V 50/60Hz
 Plate Sizes: 12mm
 Luminous Flux: $\geq 720\text{lm/m}$
 CRI: ≥ 80
 Beam Angle: 120°
 Color Temperature: 6500K/4000K/3000K
 RED/GREEN/BLUE/RGB
 Working Temperature: -10~45° C
 Life Span: 30000H
 Manner Of Packing: 50m/Roll

VMAX 220V SMD-3528-144-IP44

Power: SMD 8W/m
 Input Voltage: AC220-240V 50/60Hz
 Plate Sizes: 12mm
 Luminous Flux: $\geq 480\text{lm/m}$
 CRI: ≥ 80
 Beam Angle: 120°
 Color Temperature: RGB COLORFUL CHANGE
 Working Temperature: -10~45° C
 Life Span: 30000H
 Manner Of Packing: 50m/Roll



Strip Light
LED
and spare parts

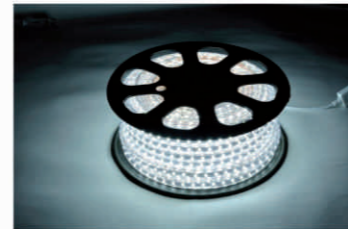
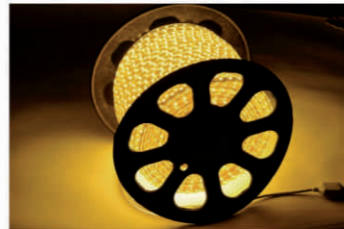
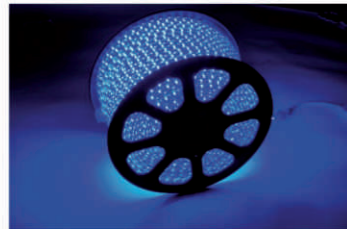
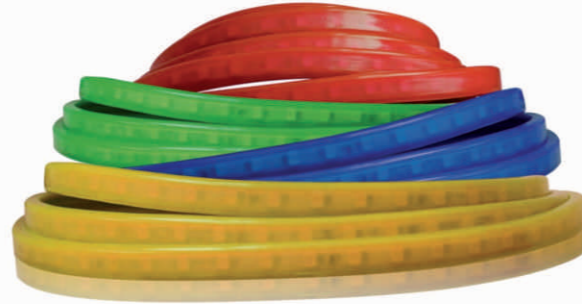
Strip Light
LED
and spare parts

220V Strip Light

2835/3014/3528/5050 **SMD** LED

MODI 220V CF-5050-60-IP44

Power: SMD 6W/m
 Input Voltage: AC220-240V 50/60Hz
 Plate Sizes: 8mm
 Luminous Flux: $\geq 300\text{lm/m}$
 CRI: ≥ 70
 Beam Angle: 120°
 Color Temperature: 6500K/4000K/3000K
 RED/GREEN/BLUE/RGB
 Working Temperature: -10~45° C
 Life Span: 25000H
 Manner Of Packing: 50m/Roll



MODI 220V 5050-60-IP44

Power: SMD 4W/m
 Input Voltage: AC220-240V 50/60Hz
 Plate Sizes: 8mm
 Luminous Flux: $\geq 320\text{lm/m}$
 CRI: ≥ 70
 Beam Angle: 120°
 Color Temperature: 6500K/4000K/3000K
 RED/GREEN/BLUE/RGB
 Working Temperature: -10~45° C
 Life Span: 25000H
 Manner Of Packing: 50m/Roll

MODI 220V 3528-60-IP44

Power: SMD 4W/m
 Input Voltage: AC220-240V 50/60Hz
 Plate Sizes: 6mm
 Luminous Flux: $\geq 280\text{lm/m}$
 CRI: ≥ 70
 Beam Angle: 120°
 Color Temperature: 6500K/4000K/3000K
 RED/GREEN/BLUE/RGB
 Working Temperature: -10~45° C
 Life Span: 25000H
 Manner Of Packing: 50m/Roll

MODI 220V 2835-2*90-IP44

Power: SMD 10W/m
 Input Voltage: AC220-240V 50/60Hz
 Plate Sizes: 12mm
 Luminous Flux: $\geq 850\text{lm/m}$
 CRI: ≥ 70
 Beam Angle: 120°
 Color Temperature: 6500K/4000K/3000K
 RED/GREEN/BLUE/RGB
 Working Temperature: -10~45° C
 Life Span: 25000H
 Manner Of Packing: 50m/Roll

MODI 220V 3014-2*120-IP44

Power: SMD 10W/m
 Input Voltage: AC220-240V 50/60Hz
 Plate Sizes: 12mm
 Luminous Flux: $\geq 850\text{lm/m}$
 CRI: ≥ 70
 Beam Angle: 120°
 Color Temperature: 6500K/4000K/3000K
 RED/GREEN/BLUE/RGB
 Working Temperature: -10~45° C
 Life Span: 25000H
 Manner Of Packing: 50m/Roll

12V Strip Light

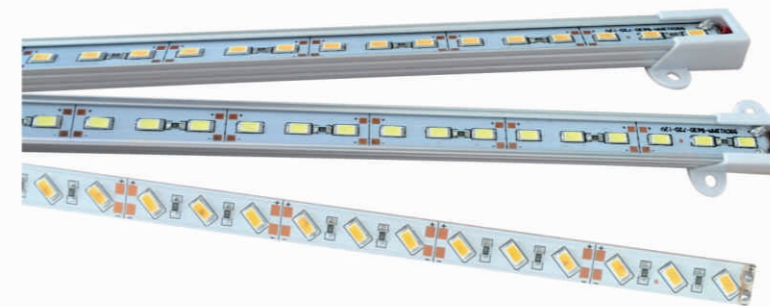
LED 3528/5050 **SMD**

MODI 12V 5050-60-IP20/65

Power: SMD 6W/m
 Input Voltage: DC12V
 Plate Sizes: 8mm
 Luminous Flux: $\geq 320\text{lm/m}$
 CRI: ≥ 70
 Beam Angle: 120°
 Color Temperature: 6500K/4000K/3000K
 RED/GREEN/BLUE/RGB
 Working Temperature: -10~45° C
 Life Span: 25000H
 Manner Of Packing: 5m/Roll or 10m/Roll

MODI 12V 3528-60-IP20/65

Power: SMD 8W/m
 Input Voltage: DC12V
 Plate Sizes: 8mm
 Luminous Flux: $\geq 320\text{lm/m}$
 CRI: ≥ 70
 Beam Angle: 120°
 Color Temperature: 6500K/4000K/3000K
 RED/GREEN/BLUE/RGB
 Working Temperature: -10~45° C
 Life Span: 25000H
 Manner Of Packing: 5m/Roll or 10m/Roll



Power: SMD 12W/m
 Input Voltage: DC12V
 Plate Sizes: 8mm
 Luminous Flux: $\geq 1300\text{lm/m}$
 CRI: ≥ 70
 Beam Angle: 120°
 Color Temperature: 6500K/4000K/3000K
 RED/GREEN/BLUE/RGB
 Working Temperature: -10~45° C
 Life Span: 25000H
 Manner Of Packing: 1m



Strip Light
LED
and spare parts

Strip Light
LED
and spare parts



V-T88A-i24

Power: 144W Max
 Input Voltage: DC12V
 Output Signal: PWM
 Load Current: 4A x 3CHs
 Remote control Color: 6500K/4000K/3000K/
 RED/GREEN/BLUE/RGB and so on
 Working Temperature: -10~45° C
 Remote control distance: ≤10m

V-T88A-R82

Power: 144W Max
 Input Voltage: DC12V
 Output Signal: PWM
 Load Current: 4A x 3CHs
 Remote control Color: 6500K/4000K/3000K/
 RED/GREEN/BLUE/RGB and so on
 Working Temperature: -10~45° C
 Remote control distance: ≤100m



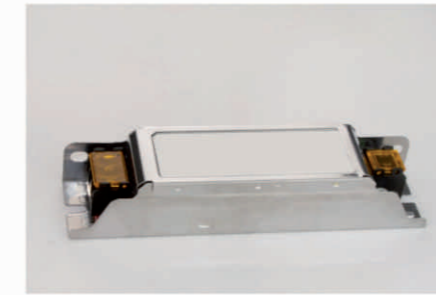
V-T31W-i24

Power: 72W Max
 Input Voltage: DC12V
 Output Signal: PWM
 Load Current: 2A x 3CHs
 Remote control Color: 6500K/4000K/3000K/
 RED/GREEN/BLUE/RGB and so on
 Working Temperature: -10~45° C
 Remote control distance: ≤10m



V-T863-i44

Power: 108W Max
 Input Voltage: DC12V
 Output Signal: PWM
 Load Current: 3A x 3CHs
 Remote control Color: 6500K/4000K/3000K/
 RED/GREEN/BLUE/RGB and so on
 Working Temperature: -10~45° C
 Remote control distance: ≤10m



V-1725N 25W

Power: 25W Max
 Input Voltage: AC220-240V 50/60Hz
 Output Voltage: DC12V 2A
 PF: 0.6
 Working Temperature: -10~45° C
 Life Span: 30000H
 Material: Dia-Cast Aluminium
 Product Size: 140x33x27mm

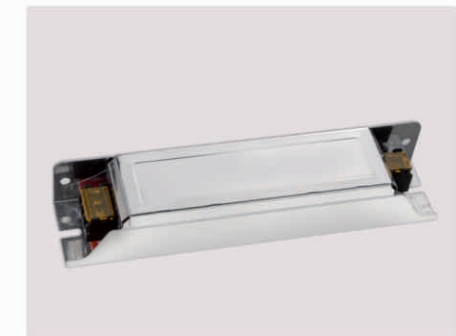


V-1736N 36W

Power: 36W Max
 Input Voltage: AC220-240V 50/60Hz
 Output Voltage: DC12V 3A
 PF: 0.6
 Working Temperature: -10~45° C
 Life Span: 30000H
 Material: Dia-Cast Aluminium
 Product Size: 163x33x27mm

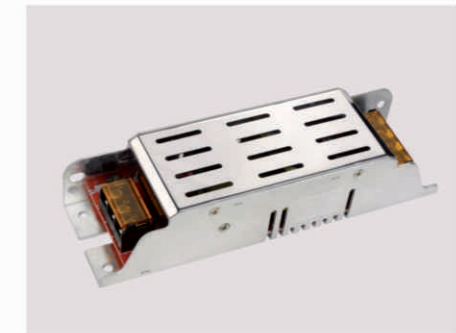
V-1760N 60W

Power: 60W Max
 Input Voltage: AC220-240V 50/60Hz
 Output Voltage: DC12V 5A
 PF: 0.6
 Working Temperature: -10~45° C
 Life Span: 30000H
 Material: Dia-Cast Aluminium
 Product Size: 180x40x29mm



V-17120N 120W

Power: 120W Max
 Input Voltage: AC220-240V 50/60Hz
 Output Voltage: DC12V 10A
 PF: 0.6
 Working Temperature: -10~45° C
 Life Span: 30000H
 Material: Dia-Cast Aluminium
 Product Size: 180x54x38mm



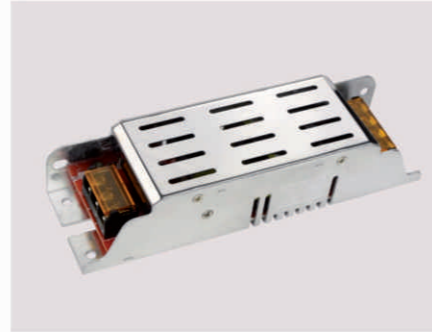
LED Driver

25/36/60/
150/200/250/360 W LED

V-17150N

150 W

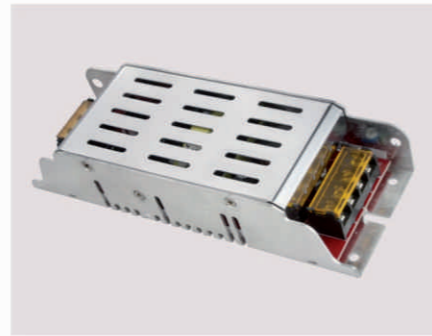
Power: 150W Max
Input Voltage: AC220-240V 50/60Hz
Output Voltage: DC12V 12A
PF: 0.6
Working Temperature: -10~45° C
Life Span: 30000H
Material: Dia-Cast Aluminium
Product Size: 180x54x38mm



V-17200N

200 W

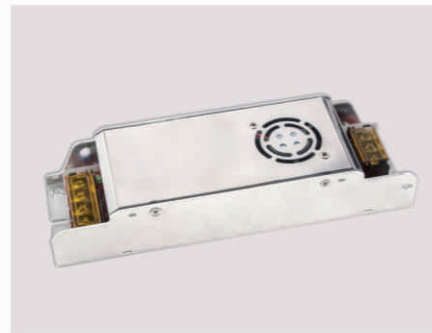
Power: 200W Max
Input Voltage: AC220-240V 50/60Hz
Output Voltage: DC12V 16.5A
PF: 0.6
Working Temperature: -10~45° C
Life Span: 30000H
Material: Dia-Cast Aluminium
Product Size: 185x65x38mm



V-17250N

250 W

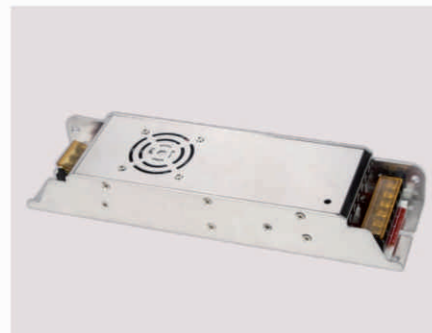
Power: 250W Max
Input Voltage: AC220-240V 50/60Hz
Output Voltage: DC12V 20A
PF: 0.6
Working Temperature: -10~45° C
Life Span: 30000H
Material: Dia-Cast Aluminium
Product Size: 202x65x38mm



V-17360N

360 W

Power: 360W Max
Input Voltage: AC220-240V 50/60Hz
Output Voltage: DC12V 30A
PF: 0.6
Working Temperature: -10~45° C
Life Span: 30000H
Material: Dia-Cast Aluminium
Product Size: 260x70x38mm



LED Driver

LED 12/30/60/100 W

V-12030C

30 W

Power: 30W Max
Input Voltage: AC220-240V 50/60Hz
Output Voltage: DC12V 2.5A
PF: 0.6
Working Temperature: -10~45° C
Life Span: 30000H
Material: Dia-Cast Aluminium
Product Size: 160x30x20mm



V-12060C

60 W

Power: 60W Max
Input Voltage: AC220-240V 50/60Hz
Output Voltage: DC12V 5A
PF: 0.6
Working Temperature: -10~45° C
Life Span: 30000H
Material: Dia-Cast Aluminium
Product Size: 160x30x20mm



V-120100C

100 W

Power: 100W Max
Input Voltage: AC220-240V 50/60Hz
Output Voltage: DC12V 8.3A
PF: 0.6
Working Temperature: -10~45° C
Life Span: 30000H
Material: Dia-Cast Aluminium
Product Size: 182x85x50mm



V-EL126060-12

12 W

Power: 12W Max
Input Voltage: AC220-240V 50/60Hz
Output Voltage: DC50V 0.5A Max
Emergency Time: 90mins
PF: 0.6
Working Temperature: -10~45° C
Life Span: 30000H
Material: Dia-Cast Aluminium
Product Size: 355x100x38mm



Lighting^{LED} Source Series



Maximize the Value
of Lighting

LED Lamp Cup



V-0424/D

4W

Power: COB 4W
Input Voltage: AC220-240V 50/60Hz
Luminous Flux: $\geq 280\text{lm}$
CRI: ≥ 75
Beam Angle: 70°
Lamp Holder: G5.3/GU10
Color Temperature: 6500K/4000K/3000K
Working Temperature: -10-45° C
Life Span: 30000H
Material: Aluminium
Product Size: $\Phi 50 \times 58\text{mm}$

V-0426/D

6W

Power: COB 6W
Input Voltage: AC220-240V 50/60Hz
Luminous Flux: $\geq 420\text{lm}$
CRI: ≥ 75
Beam Angle: 70°
Lamp Holder: G5.3/GU10
Color Temperature: 6500K/4000K/3000K
Working Temperature: -10-45° C
Life Span: 30000H
Material: Aluminium
Product Size: $\Phi 50 \times 75\text{mm}$



V-0428/D

8W

Power: COB 8W
Input Voltage: AC220-240V 50/60Hz
Luminous Flux: $\geq 580\text{lm}$
CRI: ≥ 75
Beam Angle: 70°
Lamp Holder: G5.3/GU10
Color Temperature: 6500K/4000K/3000K
Working Temperature: -10-45° C
Life Span: 30000H
Material: Aluminium
Product Size: $\Phi 50 \times 75\text{mm}$





V-LC1303

3W

Power: SMD 3W
Input Voltage: AC220-240V 50/60Hz
Luminous Flux: ≥ 240 lm
CRI: ≥ 80
Beam Angle: 38°
Lamp Holder: G5.3/GU10
Color Temperature: 6500K/4000K/3000K
Working Temperature: -10~45° C
Life Span: 30000H
Material: Dia-Cast Aluminium
Product Size: $\Phi 50 \times 49$ mm



V-LC1305

5W

Power: SMD 5W
Input Voltage: AC100-240V 50/60Hz
Luminous Flux: ≥ 400 lm
CRI: ≥ 80
Beam Angle: 38°
Lamp Holder: G5.3/GU10
Color Temperature: 6500K/4000K/3000K
Working Temperature: -10~45° C
Life Span: 30000H
Material: Dia-Cast Aluminium
Product Size: $\Phi 50 \times 49$ mm

V-LC1307

7W

Power: SMD 7W
Input Voltage: AC100-240V 50/60Hz
Luminous Flux: ≥ 500 lm
CRI: ≥ 80
Beam Angle: 55°
Lamp Holder: G5.3/GU10
Color Temperature: 6500K/4000K/3000K
Working Temperature: -10~45° C
Life Span: 30000H
Material: Dia-Cast Aluminium
Product Size: $\Phi 50 \times 49$ mm

V-LC1307D

7W

Power: SMD 7W
Input Voltage: AC220-240V 50/60Hz
Luminous Flux: ≥ 500 lm
CRI: ≥ 80
Beam Angle: 38°
Lamp Holder: G5.3/GU10
Color Temperature: 6500K/4000K/3000K
Working Temperature: -10~45° C
Life Span: 30000H
Material: Dia-Cast Aluminium
Product Size: $\Phi 50 \times 49$ mm



V-0403

3W

Power: COB 3W
Input Voltage: AC100-240V 50/60Hz
Luminous Flux: ≥ 220 lm
CRI: ≥ 80
Beam Angle: 90°
Lamp Holder: G5.3/GU10/E27
Color Temperature: 6500K/4000K/3000K
Working Temperature: -10~45° C
Life Span: 30000H
Material: Dia-Cast Aluminium
Product Size: $\Phi 49 \times 57$ mm



V-0405

3W

Power: COB 3W
Input Voltage: AC100-240V 50/60Hz
Luminous Flux: ≥ 220 lm
CRI: ≥ 80
Beam Angle: 25°
Lamp Holder: G5.3/GU10/E27
Color Temperature: 6500K/4000K/3000K
Working Temperature: -10~45° C
Life Span: 30000H
Material: Dia-Cast Aluminium
Product Size: $\Phi 49 \times 57$ mm

V-LC1005B

5W

Power: COB 5W
Input Voltage: AC100-240V 50/60Hz
Luminous Flux: ≥ 420 lm
CRI: ≥ 80
Beam Angle: 95°
Lamp Holder: G5.3/GU10/E27
Color Temperature: 6500K/4000K/3000K
Working Temperature: -10~45° C
Life Span: 30000H
Material: Dia-Cast Aluminium
Product Size: $\Phi 50 \times 59$ mm

V-LC1005Z

5W

Power: COB 5W
Input Voltage: AC100-240V 50/60Hz
Luminous Flux: ≥ 420 lm
CRI: ≥ 80
Beam Angle: 95°
Lamp Holder: G5.3/GU10/E27
Color Temperature: 6500K/4000K/3000K
Working Temperature: -10~45° C
Life Span: 30000H
Material: Dia-Cast Aluminium
Product Size: $\Phi 50 \times 59$ mm



Lighting
Source Series

Lighting
Source Series



PAR16-220V-GX5.3-3W

Power: COB 3W
 Input Voltage: AC220-240V 50/60Hz
 Luminous Flux: $\geq 280\text{lm}$
 CRI: ≥ 80
 Beam Angle: 30°
 Lamp Holder: GX5.3
 Color Temperature: 6500K/4000K/3000K
 Working Temperature: -10-45° C
 Life Span: 25000H
 Material: Glass
 Product Size: $\phi 50 \times 53\text{mm}$

PAR16-220V-GX5.3-5W

Power: COB 5W
 Input Voltage: AC220-240V 50/60Hz
 Luminous Flux: $\geq 380\text{lm}$
 CRI: ≥ 80
 Beam Angle: 30°
 Lamp Holder: GX5.3
 Color Temperature: 6500K/4000K/3000K
 Working Temperature: -10-45° C
 Life Span: 25000H
 Material: Glass
 Product Size: $\phi 50 \times 53\text{mm}$

PAR16-220V-GU10-3W

Power: COB 3W
 Input Voltage: AC220-240V 50/60Hz
 Luminous Flux: $\geq 280\text{lm}$
 CRI: ≥ 80
 Beam Angle: 30°
 Lamp Holder: GU10
 Color Temperature: 6500K/4000K/3000K
 Working Temperature: -10-45° C
 Life Span: 25000H
 Material: Glass
 Product Size: $\phi 50 \times 53\text{mm}$

PAR16-220V-GU10-5W

Power: COB 5W
 Input Voltage: AC220-240V 50/60Hz
 Luminous Flux: $\geq 380\text{lm}$
 CRI: ≥ 80
 Beam Angle: 30°
 Lamp Holder: GU10
 Color Temperature: 6500K/4000K/3000K
 Working Temperature: -10-45° C
 Life Span: 25000H
 Material: Glass
 Product Size: $\phi 50 \times 53\text{mm}$



MR16-12V-GU5.3-3W

Power: COB 3W
 Input Voltage: DC12V
 Luminous Flux: $\geq 280\text{lm}$
 CRI: ≥ 80
 Beam Angle: 30°
 Lamp Holder: GU5.3
 Color Temperature: 6500K/4000K/3000K
 Working Temperature: -10-45° C
 Life Span: 25000H
 Material: Glass
 Product Size: $\phi 50 \times 47\text{mm}$

MR16-12V-GU5.3-5W

Power: COB 5W
 Input Voltage: DC12V
 Luminous Flux: $\geq 380\text{lm}$
 CRI: ≥ 80
 Beam Angle: 30°
 Lamp Holder: GU5.3
 Color Temperature: 6500K/4000K/3000K
 Working Temperature: -10-45° C
 Life Span: 25000H
 Material: Glass
 Product Size: $\phi 50 \times 47\text{mm}$

JR16-220V-GX5.3-3W

Power: COB 3W
 Input Voltage: AC220-240V 50/60Hz
 Luminous Flux: $\geq 280\text{lm}$
 CRI: ≥ 80
 Beam Angle: 30°
 Lamp Holder: GX5.3
 Color Temperature: 6500K/4000K/3000K
 Working Temperature: -10-45° C
 Life Span: 25000H
 Material: Glass
 Product Size: $\phi 50 \times 47\text{mm}$

JR16-220V-GX5.3-5W

Power: COB 5W
 Input Voltage: AC220-240V 50/60Hz
 Luminous Flux: $\geq 380\text{lm}$
 CRI: ≥ 80
 Beam Angle: 30°
 Lamp Holder: GX5.3
 Color Temperature: 6500K/4000K/3000K
 Working Temperature: -10-45° C
 Life Span: 25000H
 Material: Glass
 Product Size: $\phi 50 \times 47\text{mm}$



Lighting Source Series

Lighting Source Series



V-0411



Power: COB 5W
 Input Voltage: AC100-240V 50/60Hz
 Luminous Flux: ≥450lm
 CRi: ≥70
 Beam Angle: 30°
 Lamp Holder: G5.3/GU10/E27
 Color Temperature: 6500K/4000K/3000K
 Working Temperature: -10-45° C
 Life Span: 30000H
 Material: Aluminium
 Product Size: φ50x75mm

MD-0420



Power: 4W
 Input Voltage: AC220-240V 50/60Hz
 Luminous Flux: ≥260lm
 CRi: ≥70
 Beam Angle: 24°
 Lamp Holder: G5.3/GU10/E27
 Color Temperature: 6500K/4000K/3000K
 Working Temperature: -10-45° C
 Life Span: 25000H
 Material: Aluminium
 Product Size: φ49x64mm



MD-0421



Power: 5W
 Input Voltage: AC220-240V 50/60Hz
 Luminous Flux: ≥280lm
 CRi: ≥70
 Beam Angle: 24°
 Lamp Holder: G5.3/GU10/E27
 Color Temperature: 6500K/4000K/3000K
 Working Temperature: -10-45° C
 Life Span: 25000H
 Material: Aluminium
 Product Size: φ50x71mm

MD-0430A/B/C



Power: 5W
 Input Voltage: AC220-240V 50/60Hz
 Luminous Flux: ≥320lm
 CRi: ≥70
 Beam Angle: 45°
 Lamp Holder: G5.3/GU10/E27
 Color Temperature: 6500K/4000K/3000K
 Working Temperature: -10-45° C
 Life Span: 25000H
 Material: Aluminium
 Product Size: φ50x77mm



M-0401



Power: 3W
 Input Voltage: DC12V/AC220-240V 50/60Hz
 Luminous Flux: ≥180lm
 CRi: ≥65
 Beam Angle: 24°
 Lamp Holder: G5.3/GU10/E27
 Color Temperature: 6500K/4000K/3000K
 Working Temperature: -10-45° C
 Life Span: 25000H
 Material: Aluminium
 Product Size: φ50x61mm

MD-0434



Power: 4W
 Input Voltage: AC220-240V 50/60Hz
 Luminous Flux: ≥240lm
 CRi: ≥70
 Lamp Holder: G5.3/GU10/E27
 Color Temperature: 6500K/4000K/3000K
 Working Temperature: -10-45° C
 Life Span: 25000H
 Material: Aluminium
 Product Size: φ50x62mm

M-LC1207



Power: COB 7W
 Input Voltage: AC100-240V 50/60Hz
 Luminous Flux: ≥410lm
 CRi: ≥60
 Beam Angle: 65°
 Lamp Holder: G5.3/GU10/E27
 Color Temperature: 6500K/4000K/3000K
 Working Temperature: -10-45° C
 Life Span: 25000H
 Material: Aluminium
 Product Size: φ48x93mm

M-LC1207

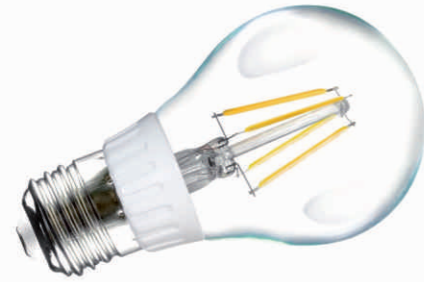


Power: SMD 7W
 Input Voltage: AC220-240V 50/60Hz
 Luminous Flux: ≥410lm
 CRi: ≥70
 Beam Angle: 65°
 Lamp Holder: G5.3/GU10/E27
 Color Temperature: 6500K/4000K/3000K
 Working Temperature: -10-45° C
 Life Span: 25000H
 Material: Aluminium
 Product Size: φ48x93mm



Lighting Source Series

Lighting Source Series



V-B0306

6W

Power: 6W
 Input Voltage: AC220-240V 50/60Hz
 Luminous Flux: $\geq 650\text{lm}$
 CRt: ≥ 80
 Beam Angle: 360°
 Lamp Holder: E27/B22
 Color Temperature: 6500K/4000K/3000K
 Surface Treatment: White/Silver/Golden
 Working Temperature: -10~45° C
 Life Span: 30000H
 Material: Glass
 Product Size: $\Phi 60 \times 109\text{mm}$

MD-B0406

6W

Power: 6W
 Input Voltage: AC100-240V 50/60Hz
 Luminous Flux: $\geq 650\text{lm}$
 CRt: ≥ 80
 Beam Angle: 360°
 Lamp Holder: E27/B22
 Color Temperature: 6500K/4000K/2700K
 Working Temperature: -10~45° C
 Life Span: 25000H
 Material: Glass
 Product Size: $\Phi 60 \times 105\text{mm}$



V-CB0403

3W

Power: 3W
 Input Voltage: AC220-240V 50/60Hz
 Luminous Flux: $\geq 280\text{lm}$
 CRt: ≥ 80
 Beam Angle: 360°
 Lamp Holder: E14
 Color Temperature: 6500K/4000K/3000K
 Surface Treatment: Silver/Golden
 Working Temperature: -10~45° C
 Life Span: 30000H
 Material: Glass
 Product Size: $\Phi 35 \times 118\text{mm}$



V-TB0403

3W

Power: 3W
 Input Voltage: AC220-240V 50/60Hz
 Luminous Flux: $\geq 280\text{lm}$
 CRt: ≥ 80
 Beam Angle: 360°
 Lamp Holder: E14
 Color Temperature: 6500K/4000K/3000K
 Surface Treatment: Silver/Golden
 Working Temperature: -10~45° C
 Life Span: 30000H
 Material: Glass
 Product Size: $\Phi 35 \times 98\text{mm}$



V-TB0504D

4W

Power: 4W
 Input Voltage: AC220-240V 50/60Hz
 Luminous Flux: $\geq 320\text{lm}$
 CRt: ≥ 80
 Beam Angle: 360°
 Lamp Holder: E14
 Color Temperature: 6500K/4000K/2700K
 Working Temperature: -10~45° C
 Life Span: 30000H
 Material: Glass
 Product Size: $\Phi 35 \times 121\text{mm}$



V-CB0504D

4W

Power: 4W
 Input Voltage: AC220-240V 50/60Hz
 Luminous Flux: $\geq 320\text{lm}$
 CRt: ≥ 80
 Beam Angle: 360°
 Lamp Holder: E14
 Color Temperature: 6500K/4000K/2700K
 Working Temperature: -10~45° C
 Life Span: 30000H
 Material: Glass
 Product Size: $\Phi 35 \times 138\text{mm}$



MD-CB0503

3W

Power: 3W
 Input Voltage: AC220-240V 50/60Hz
 Luminous Flux: $\geq 350\text{lm}$
 CRt: ≥ 80
 Beam Angle: 360°
 Lamp Holder: E14
 Color Temperature: 6500K/4000K/3000K
 Surface Treatment: Silver/Golden
 Working Temperature: -10~45° C
 Life Span: 30000H
 Material: Glass
 Product Size: $\Phi 35 \times 118\text{mm}$



MD-TB0503

3W

Power: 3W
 Input Voltage: AC220-240V 50/60Hz
 Luminous Flux: $\geq 350\text{lm}$
 CRt: ≥ 80
 Beam Angle: 360°
 Lamp Holder: E14
 Color Temperature: 6500K/4000K/2700K
 Surface Treatment: Silver/Golden
 Working Temperature: -10~45° C
 Life Span: 25000H
 Material: Glass
 Product Size: $\Phi 35 \times 98\text{mm}$





G4-DC12V/AC220V

1.5W

Power: 1.5W
Input Voltage: DC12V/AC220-240V 50/60Hz
Luminous Flux: ≥ 80 lm
CRI: ≥ 75
Beam Angle: 300°
Lamp Holder: Direct Plug-In
Color Temperature: 6500K/4000K/3000K
Working Temperature: -10~45° C
Life Span: 30000H
Material: PC
Product Size: $\Phi 10 \times 35$ mm

G4-DC12V/AC220V

3W

Power: 3W
Input Voltage: DC12V/AC220-240V 50/60Hz
Luminous Flux: ≥ 190 lm
CRI: ≥ 75
Beam Angle: 300°
Lamp Holder: Direct Plug-In
Color Temperature: 6500K/4000K/3000K
Working Temperature: -10~45° C
Life Span: 30000H
Material: PC
Product Size: $\Phi 14 \times 41$ mm

G9-DC12V/AC220V

3W

Power: 3W
Input Voltage: DC12V/AC220-240V 50/60Hz
Luminous Flux: ≥ 220 lm
CRI: ≥ 75
Beam Angle: 300°
Lamp Holder: Direct Plug-In/E27
Color Temperature: 6500K/4000K/3000K
Working Temperature: -10~45° C
Life Span: 30000H
Material: PC
Product Size: $\Phi 16 \times 50$ mm



V-6U06M/R/T

6W

Power: 6W
Input Voltage: AC220-240V 50/60Hz
Luminous Flux: ≥ 550 lm
CRI: ≥ 70
Beam Angle: 270°
Lamp Holder: E14/E27/B22
Color Temperature: 6500K/4000K/3000K
Working Temperature: -10~45° C
Life Span: 30000H
Material: Aluminium+Plastic
Product Size: $\Phi 48 \times 125$ mm

V-6U10M/R/T

10W

Power: 10W
Input Voltage: AC220-240V 50/60Hz
Luminous Flux: ≥ 900 lm
CRI: ≥ 70
Beam Angle: 270°
Lamp Holder: E14/E27/B22
Color Temperature: 6500K/4000K/3000K
Working Temperature: -10~45° C
Life Span: 30000H
Material: Aluminium+Plastic
Product Size: $\Phi 48 \times 140$ mm

V-6U14M/R/T

14W

Power: 14W
Input Voltage: AC220-240V 50/60Hz
Luminous Flux: ≥ 1200 lm
CRI: ≥ 70
Beam Angle: 270°
Lamp Holder: E14/E27/B22
Color Temperature: 6500K/4000K/3000K
Working Temperature: -10~45° C
Life Span: 30000H
Material: Aluminium+Plastic
Product Size: $\Phi 48 \times 157$ mm



Lighting
Source Series

Lighting
Source Series



Compact Fluorescent Lamp

15/11/20/30 W CFL



V-SFS-15 15W

Power: 15W
 Input Voltage: AC220-240V 50/60Hz
 Luminous Flux: $\geq 700\text{lm}$
 CRI: ≥ 80
 Beam Angle: 360°
 Color Temperature: 6400K/4000K/2700K
 Lamp Hoder: E14/E27/B22
 Working Temperature: -10~45° C
 Life Span: 8000H
 Material: PC+Glass
 Product Size: $\Phi 38 \times 108\text{mm}$

V-MHS-20 20W

Power: 20W
 Input Voltage: AC220-240V 50/60Hz
 Luminous Flux: $\geq 935\text{lm}$
 CRI: ≥ 80
 Beam Angle: 360°
 Color Temperature: 6400K/4000K/2700K
 Lamp Hoder: E14/E27/B22
 Working Temperature: -10~45° C
 Life Span: 8000H
 Material: PC+Glass
 Product Size: $\Phi 43 \times 130\text{mm}$

V-T2HS-11 SUPER 11W

Power: 11W
 Input Voltage: AC220-240V 50/60Hz
 Luminous Flux: $\geq 514\text{lm}$
 CRI: ≥ 80
 Beam Angle: 360°
 Color Temperature: 6400K/4000K/2700K
 Lamp Hoder: E14/E27
 Working Temperature: -10~45° C
 Life Span: 12000H
 Material: PC+Glass
 Product Size: $\Phi 33 \times 100\text{mm}$

V-MFS-20 20W

Power: 20W
 Input Voltage: AC220-240V 50/60Hz
 Luminous Flux: $\geq 935\text{lm}$
 CRI: ≥ 80
 Beam Angle: 360°
 Color Temperature: 6400K/4000K/2700K
 Lamp Hoder: E14/E27/B22
 Working Temperature: -10~45° C
 Life Span: 8000H
 Material: PC+Glass
 Product Size: $\Phi 48 \times 120\text{mm}$

V-T2HS-30 SUPER 30W

Power: 30W
 Input Voltage: AC220-240V 50/60Hz
 Luminous Flux: $\geq 1479\text{lm}$
 CRI: ≥ 80
 Beam Angle: 360°
 Color Temperature: 6400K/4000K/2700K
 Lamp Hoder: E14/E27
 Working Temperature: -10~45° C
 Life Span: 12000H
 Material: PC+Glass
 Product Size: $\Phi 52 \times 120\text{mm}$

Compact Fluorescent Lamp

CFL 18/20/26 W



V-M3U-18 18W

Power: 18W
 Input Voltage: AC220-240V 50/60Hz
 Luminous Flux: $\geq 840\text{lm}$
 CRI: ≥ 80
 Beam Angle: 360°
 Color Temperature: 6400K/4000K/2700K
 Lamp Hoder: E14/E27/B22
 Working Temperature: -10~45° C
 Life Span: 8000H
 Material: PC+Glass
 Product Size: $\Phi 43 \times 128\text{mm}$



V-B3U-26 26W

Power: 26W
 Input Voltage: AC220-240V 50/60Hz
 Luminous Flux: $\geq 1260\text{lm}$
 CRI: ≥ 80
 Beam Angle: 360°
 Color Temperature: 6400K/4000K/2700K
 Lamp Hoder: E14/E27/B22
 Working Temperature: -10~45° C
 Life Span: 8000H
 Material: PC+Glass
 Product Size: $\Phi 53 \times 168\text{mm}$



V-M3U-18 SUPER+EMC 18W

Power: 18W
 Input Voltage: AC220-240V 50/60Hz
 Luminous Flux: $\geq 840\text{lm}$
 CRI: ≥ 80
 Beam Angle: 360°
 Color Temperature: 6400K/4000K/2700K
 Lamp Hoder: E14/E27/B22
 Working Temperature: -10~45° C
 Life Span: 12000H
 Material: PC+Glass
 Product Size: $\Phi 43 \times 128\text{mm}$



V-M3TT-20 SUPER+EMC 20W

Power: 20W
 Input Voltage: AC220-240V 50/60Hz
 Luminous Flux: $\geq 1020\text{lm}$
 CRI: ≥ 80
 Beam Angle: 360°
 Color Temperature: 6400K/4000K/2700K
 Lamp Hoder: E14/E27/B22
 Working Temperature: -10~45° C
 Life Span: 12000H
 Material: PC+Glass
 Product Size: $\Phi 43 \times 148\text{mm}$



Lighting Source Series

Lighting Source Series

LED
T5 Tube
4/8/14/18 **W** LED



Lighting ^{LED} Source Series

MD-T5030 **4W**
Power: SMD 4W
Input Voltage: AC220-240V 50/60Hz
Luminous Flux: ≥420lm
CRI: ≥70
Beam Angle: 120°
Color Temperature: 6500K/4000K/3000K
Surface Treatment: SL
Working Temperature: -10~45° C
Life Span: 25000H
Material: Aluminium+Plastic
Product Size: 315x20x30mm

MD-T5090 **14W**
Power: SMD 14W
Input Voltage: AC220-240V 50/60Hz
Luminous Flux: ≥1300lm
CRI: ≥70
Beam Angle: 120°
Color Temperature: 6500K/4000K/3000K
Surface Treatment: SL
Working Temperature: -10~45° C
Life Span: 25000H
Material: Aluminium+Plastic
Product Size: 857x20x30mm

MD-T5060 **8W**
Power: SMD 8W
Input Voltage: AC220-240V 50/60Hz
Luminous Flux: ≥780lm
CRI: ≥70
Beam Angle: 120°
Color Temperature: 6500K/4000K/3000K
Surface Treatment: SL
Working Temperature: -10~45° C
Life Span: 25000H
Material: Aluminium+Plastic
Product Size: 575x20x30mm

MD-T50120 **18W**
Power: SMD 18W
Input Voltage: AC220-240V 50/60Hz
Luminous Flux: ≥1700lm
CRI: ≥70
Beam Angle: 120°
Color Temperature: 6500K/4000K/3000K
Surface Treatment: SL
Working Temperature: -10~45° C
Life Span: 25000H
Material: Aluminium+Plastic
Product Size: 1170x20x30mm

LED
T8 Tube
LED **NEW** 9/14/18 **W**



Lighting ^{LED} Source Series

M-T860R-09 **9W**
Power: SMD 9W
Input Voltage: AC220-240V 50/60Hz
Luminous Flux: ≥620lm
CRI: ≥70
Beam Angle: 300°
Color Temperature: 6500K/4000K/3000K
Working Temperature: -10~45° C
Life Span: 25000H
Material: Glass+Plastic
Product Size: Φ28x600mm

M-T890R-14 **14W**
Power: SMD 14W
Input Voltage: AC220-240V 50/60Hz
Luminous Flux: ≥1000lm
CRI: ≥70
Beam Angle: 300°
Color Temperature: 6500K/4000K/3000K
Working Temperature: -10~45° C
Life Span: 25000H
Material: Glass+Plastic
Product Size: Φ28x900mm

M-T8120R-18 **18W**
Power: SMD 18W
Input Voltage: AC220-240V 50/60Hz
Luminous Flux: ≥1400lm
CRI: ≥70
Beam Angle: 300°
Color Temperature: 6500K/4000K/3000K
Working Temperature: -10~45° C
Life Span: 25000H
Material: Glass+Plastic
Product Size: Φ28x1200mm



LED Track Light



LED Commercial Track Light



V-TL1030 30W

Power: COB 30W
 Input Voltage: AC100-240V 50/60Hz
 Luminous Flux: $\geq 2300\text{lm}$
 CRI: ≥ 80
 Beam Angle: 24°
 Color Temperature: 6500K/4000K/3000K
 Working Temperature: -10~45° C
 Life Span: 30000H
 Material: Dia-Cast Aluminium+PC
 Product Size: $\phi 95 \times 108 \times 180\text{mm}$



V-TL1130 30W

Power: COB 30W
 Input Voltage: AC100-240V 50/60Hz
 Luminous Flux: $\geq 2300\text{lm}$
 CRI: ≥ 80
 Beam Angle: 24°
 Color Temperature: 6500K/4000K/3000K
 Working Temperature: -10~45° C
 Life Span: 30000H
 Material: Dia-Cast Aluminium+PC
 Product Size: $\phi 93 \times 135 \times 185\text{mm}$

V-TL1230 30W

Power: COB 30W
 Input Voltage: AC100-240V 50/60Hz
 Luminous Flux: $\geq 2300\text{lm}$
 CRI: ≥ 80
 Beam Angle: 24°
 Color Temperature: 6500K/4000K/3000K
 Working Temperature: -10~45° C
 Life Span: 30000H
 Material: Dia-Cast Aluminium+PC
 Product Size: $\phi 95 \times 180 \times 225\text{mm}$



LED Track Light

Maximize the Value of Lighting



20/30 W LED



V-TL1330 30W

Power: COB 30W
 Input Voltage: AC100-240V 50/60Hz
 Luminous Flux: \geq 2300lm
 CRi: \geq 80
 Beam Angle: 24°
 Color Temperature: 6500K/4000K/3000K
 Working Temperature: -10~45° C
 Life Span: 30000H
 Material: Dia-Cast Aluminium+PC
 Product Size: Φ 106x198x210mm



V-TL1420 20W

Power: COB 20W
 Input Voltage: AC100-240V 50/60Hz
 Luminous Flux: \geq 1800lm
 CRi: \geq 80
 Beam Angle: 24°
 Color Temperature: 6500K/4000K/3000K
 Working Temperature: -10~45° C
 Life Span: 30000H
 Material: Dia-Cast Aluminium+PC
 Product Size: Φ 101x113x165x192mm



V-TL1530 30W

Power: COB 30W
 Input Voltage: AC100-240V 50/60Hz
 Luminous Flux: \geq 2300lm
 CRi: \geq 80
 Beam Angle: 24°
 Color Temperature: 6500K/4000K/3000K
 Working Temperature: -10~45° C
 Life Span: 30000H
 Material: Dia-Cast Aluminium+PC
 Product Size: Φ 105x153x200mm

V-TL1630 30W

Power: COB 30W
 Input Voltage: AC100-240V 50/60Hz
 Luminous Flux: \geq 2300lm
 CRi: \geq 80
 Beam Angle: 24°
 Color Temperature: 6500K/4000K/3000K
 Working Temperature: -10~45° C
 Life Span: 30000H
 Material: Dia-Cast Aluminium+PC
 Product Size: Φ 100x153x131x193mm



LED 30 W



V-H233 30W

Power: COB 30W
 Input Voltage: AC100-240V 50/60Hz
 Luminous Flux: \geq 2300lm
 CRi: \geq 80
 Beam Angle: 24°
 Color Temperature: 6500K/4000K/3000K
 Working Temperature: -10~45° C
 Life Span: 30000H
 Material: Dia-Cast Aluminium+PC
 Product Size: Φ 95x125x200mm



MD-H234 30W

Power: COB 30W
 Input Voltage: AC220-240V 50/60Hz
 Luminous Flux: \geq 2800lm
 CRi: \geq 80
 Beam Angle: 24°
 Color Temperature: 6500K/4000K/3000K
 Working Temperature: -10~45° C
 Life Span: 25000H
 Material: Dia-Cast Aluminium+PC
 Product Size: Φ 105x145x225mm



V-H227 30W

Power: COB 30W
 Input Voltage: AC100-240V 50/60Hz
 Luminous Flux: \geq 2300lm
 CRi: \geq 80
 Beam Angle: 24°
 Color Temperature: 6500K/4000K/3000K
 Working Temperature: -10~45° C
 Life Span: 30000H
 Material: Dia-Cast Aluminium+PC
 Product Size: Φ 80x172x177mm



MD-H204-7

7W

Power: COB 7W
 Input Voltage: AC220-240V 50/60Hz
 Luminous Flux: ≥680lm
 CRI: ≥80
 Beam Angle: 24°
 Color Temperature: 6500K/4000K/3000K
 Surface Treatment: WH/BK
 Working Temperature: -10~45° C
 Life Span: 25000H
 Material: Dia-Cast Aluminium+PC
 Product Size: φ53x100x145mm



MD-H204-15

15W

Power: COB 15W
 Input Voltage: AC220-240V 50/60Hz
 Luminous Flux: ≥1000lm
 CRI: ≥80
 Beam Angle: 24°
 Color Temperature: 6500K/4000K/3000K
 Surface Treatment: WH/BK
 Working Temperature: -10~45° C
 Life Span: 25000H
 Material: Dia-Cast Aluminium+PC
 Product Size: φ73x110x155mm

MD-H204-20

20W

Power: COB 20W
 Input Voltage: AC220-240V 50/60Hz
 Luminous Flux: ≥1300lm
 CRI: ≥80
 Beam Angle: 24°
 Color Temperature: 6500K/4000K/3000K
 Surface Treatment: WH/BK
 Working Temperature: -10~45° C
 Life Span: 25000H
 Material: Dia-Cast Aluminium+PC
 Product Size: φ100x140x218mm

MD-H222-15

15W

Power: COB 15W
 Input Voltage: AC220-240V 50/60Hz
 Luminous Flux: ≥1000lm
 CRI: ≥80
 Beam Angle: 24°
 Color Temperature: 6500K/4000K/3000K
 Surface Treatment: WH/BK
 Working Temperature: -10~45° C
 Life Span: 25000H
 Material: Dia-Cast Aluminium+PC
 Product Size: φ90x130x180mm

MD-H222-20

20W

Power: COB 20W
 Input Voltage: AC220-240V 50/60Hz
 Luminous Flux: ≥1300lm
 CRI: ≥80
 Beam Angle: 24°
 Color Temperature: 6500K/4000K/3000K
 Surface Treatment: WH/BK
 Working Temperature: -10~45° C
 Life Span: 25000H
 Material: Dia-Cast Aluminium+PC
 Product Size: φ90x130x180mm

LED
Track Light



Maximize the Value
of Lighting



Commercial Track Light

30W NEW LED



V-TL1930 30W

Power: COB 30W
 Input Voltage: AC220-240V 50/60Hz
 Luminous Flux: $\geq 2800\text{lm}$
 CRI: ≥ 85
 Beam Angle: 24°
 Color Temperature: 6500K/4000K/3000K
 Surface Treatment: WH/BK/WH+BK
 Working Temperature: -10~45° C
 Life Span: 30000H
 Material: Dia-Cast Aluminium+PC
 Product Size: $\phi 170 \times 267 \times 108 \times 210\text{mm}$

Commercial Track Light

LED NEW 30/50W



V-TL2230 30W

Power: COB 30W
 Input Voltage: AC220-240V 50/60Hz
 Luminous Flux: $\geq 2800\text{lm}$
 CRI: ≥ 85
 Beam Angle: 24°
 Color Temperature: 6500K/4000K/3000K
 Surface Treatment: WH/BK
 Working Temperature: -10~45° C
 Life Span: 30000H
 Material: Dia-Cast Aluminium+PC
 Product Size: $\phi 107 \times 122 \times 122 \times 235\text{mm}$

V-TL2030 30W

Power: COB 30W
 Input Voltage: AC220-240V 50/60Hz
 Luminous Flux: $\geq 2800\text{lm}$
 CRI: ≥ 85
 Beam Angle: 24°
 Color Temperature: 6500K/4000K/3000K
 Surface Treatment: WH/BK
 Working Temperature: -10~45° C
 Life Span: 30000H
 Material: Dia-Cast Aluminium+PC
 Product Size: $\phi 107 \times 180 \times 135 \times 145\text{mm}$



MD-TL2430 30W

Power: COB 30W
 Input Voltage: AC220-240V 50/60Hz
 Luminous Flux: $\geq 2600\text{lm}$
 CRI: ≥ 80
 Beam Angle: 24°
 Color Temperature: 6500K/4000K/3000K
 Surface Treatment: WH/BK
 Working Temperature: -10~45° C
 Life Span: 25000H
 Material: Dia-Cast Aluminium+PC
 Product Size: $\phi 110 \times 165 \times 200\text{mm}$



V-TL2130 30W

Power: COB 30W
 Input Voltage: AC220-240V 50/60Hz
 Luminous Flux: $\geq 2800\text{lm}$
 CRI: ≥ 85
 Beam Angle: 24°
 Color Temperature: 6500K/4000K/3000K
 Surface Treatment: WH/BK
 Working Temperature: -10~45° C
 Life Span: 30000H
 Material: Dia-Cast Aluminium+PC
 Product Size: $\phi 115 \times 210\text{mm}$

V-TL2550 50W

Power: COB 50W
 Input Voltage: AC220-240V 50/60Hz
 Luminous Flux: $\geq 4800\text{lm}$
 CRI: ≥ 85
 Beam Angle: 24°
 Color Temperature: 6500K/4000K/3000K
 Surface Treatment: WH/BK
 Working Temperature: -10~45° C
 Life Span: 30000H
 Material: Dia-Cast Aluminium+PC
 Product Size: $\phi 203 \times 107 \times 157\text{mm}$



LED Track Light

LED Track Light



V-PAR30T-30W 30W

Power: 30W
 Input Voltage: AC220-240V 50/60Hz
 Luminous Flux: $\geq 2200\text{lm}$
 CRI: ≥ 80
 Beam Angle: 18°
 Color Temperature: 6500K/4000K/3000K
 Working Temperature: -10~45° C
 Life Span: 30000H
 Material: Aluminium+PC
 Product Size: $\Phi 100 \times 133\text{mm}$

V-PAR30-35W 35W

Power: 35W
 Input Voltage: AC220-240V 50/60Hz
 Luminous Flux: $\geq 2800\text{lm}$
 CRI: ≥ 80
 Beam Angle: 18°
 Color Temperature: 6500K/4000K/3000K
 Working Temperature: -10~45° C
 Life Span: 30000H
 Material: Aluminium+PC
 Product Size: $\Phi 95 \times 118\text{mm}$



V-PQ0935R

Material: Dia-Cast Aluminium
 Product Size: $\Phi 160 \times 160\text{mm}$
 Hole Size: $\Phi 150\text{mm}$



V-P0835R

Surface Treatment: WH/BK
 Material: Dia-Cast Aluminium
 Product Size: $\Phi 108 \times 147\text{mm}$



V-TL1835

Surface Treatment: WH/BK
 Material: Dia-Cast Aluminium
 Product Size: $\Phi 120 \times 205\text{mm}$



V-TL1735

Surface Treatment: WH/BK
 Material: Dia-Cast Aluminium
 Product Size: $\Phi 119 \times 235\text{mm}$

LED High bay



Maximize the Value of Lighting



70/100/150/200 **W** **NEW** LED



V-MLD0170

70W

Power: COB 70W
 Input Voltage: AC100-240V 50/60Hz
 Luminous Flux: $\geq 5600\text{lm}$
 CRI: ≥ 70
 Beam Angle: 30° /60° /100°
 Color Temperature: 6500K/4000K/3000K
 Working Temperature: -10~45° C
 Surface Treatment: SL
 Life Span: 30000H
 Material: Aluminium
 Product Size: $\Phi 304 \times 186 \times 270\text{mm}$

V-MLD01150

150W

Power: COB 150W
 Input Voltage: AC100-240V 50/60Hz
 Luminous Flux: $\geq 14000\text{lm}$
 CRI: ≥ 70
 Beam Angle: 30° /60° /100°
 Color Temperature: 6500K/4000K/3000K
 Working Temperature: -10~45° C
 Surface Treatment: SL
 Life Span: 30000H
 Material: Aluminium
 Product Size: $\Phi 304 \times 186 \times 345\text{mm}$

V-MLD01100

100W

Power: COB 100W
 Input Voltage: AC100-240V 50/60Hz
 Luminous Flux: $\geq 7200\text{lm}$
 CRI: ≥ 70
 Beam Angle: 30° /60° /100°
 Color Temperature: 6500K/4000K/3000K
 Working Temperature: -10~45° C
 Surface Treatment: SL
 Life Span: 30000H
 Material: Aluminium
 Product Size: $\Phi 304 \times 186 \times 295\text{mm}$

V-MLD01200

200W

Power: COB 200W
 Input Voltage: AC100-240V 50/60Hz
 Luminous Flux: $\geq 18000\text{lm}$
 CRI: ≥ 70
 Beam Angle: 30° /60° /100°
 Color Temperature: 6500K/4000K/3000K
 Working Temperature: -10~45° C
 Surface Treatment: SL
 Life Span: 30000H
 Material: Aluminium
 Product Size: $\Phi 304 \times 186 \times 300\text{mm}$

LED **NEW** 120/150/200/300/400/500 **W**

V-MLD04120

120W

Power: COB 120W
 Input Voltage: AC100-240V 50/60Hz
 Luminous Flux: $\geq 10500\text{lm}$
 CRI: ≥ 70
 Beam Angle: 90° /120°
 Color Temperature: 6500K/4000K/3000K
 Working Temperature: -10~45° C
 Surface Treatment: SL
 Life Span: 30000H
 Material: Aluminium

V-MLD04150

150W

Power: COB 150W
 Input Voltage: AC100-240V 50/60Hz
 Luminous Flux: $\geq 13500\text{lm}$
 CRI: ≥ 70
 Beam Angle: 90° /120°
 Color Temperature: 6500K/4000K/3000K
 Working Temperature: -10~45° C
 Surface Treatment: SL
 Life Span: 30000H
 Material: Aluminium

V-MLD04200

200W

Power: COB 200W
 Input Voltage: AC100-240V 50/60Hz
 Luminous Flux: $\geq 18000\text{lm}$
 CRI: ≥ 70
 Beam Angle: 30° /60° /100°
 Color Temperature: 6500K/4000K/3000K
 Working Temperature: -10~45° C
 Surface Treatment: SL
 Life Span: 30000H
 Material: Aluminium

V-MLD04300

300W

Power: COB 300W
 Input Voltage: AC100-240V 50/60Hz
 Luminous Flux: $\geq 27000\text{lm}$
 CRI: ≥ 70
 Beam Angle: 30° /60° /100°
 Color Temperature: 6500K/4000K/3000K
 Working Temperature: -10~45° C
 Surface Treatment: SL
 Life Span: 30000H
 Material: Aluminium

V-MLD04400

400W

Power: COB 400W
 Input Voltage: AC100-240V 50/60Hz
 Luminous Flux: $\geq 36000\text{lm}$
 CRI: ≥ 70
 Beam Angle: 30° /60° /100°
 Color Temperature: 6500K/4000K/3000K
 Working Temperature: -10~45° C
 Surface Treatment: SL
 Life Span: 30000H
 Material: Aluminium



LED
High bay

LED
High bay



20/30/80/100 W NEW LED



MD-MLD0320

20W

Power: SMD 20W
Input Voltage: AC220-240V 50/60Hz
Luminous Flux: $\geq 1600\text{lm}$
CRI: ≥ 70
Beam Angle: 100°
Color Temperature: 6500K/4000K/3000K
Working Temperature: -10~50° C
Surface Treatment: Red/Yellow/Blue/Green
Life Span: 25000H
Material: Aluminium+PC
Product Size: $\Phi 250 \times 120\text{mm}$

MD-MLD0330

30W

Power: SMD 30W
Input Voltage: AC220-240V 50/60Hz
Luminous Flux: $\geq 2400\text{lm}$
CRI: ≥ 70
Beam Angle: 100°
Color Temperature: 6500K/4000K/3000K
Working Temperature: -10~50° C
Surface Treatment: Red/Yellow/Blue/Green
Life Span: 25000H
Material: Aluminium+PC
Product Size: $\Phi 310 \times 140\text{mm}$



MD-MLD0380

80W

Power: SMD 80W
Input Voltage: AC220-240V 50/60Hz
Luminous Flux: $\geq 6400\text{lm}$
CRI: ≥ 70
Beam Angle: 100°
Color Temperature: 6500K/4000K/3000K
Working Temperature: -10~50° C
Surface Treatment: Red/Yellow/Blue/Green
Life Span: 25000H
Material: Aluminium+PC
Product Size: $\Phi 390 \times 170\text{mm}$

MD-MLD03100

100W

Power: SMD 100W
Input Voltage: AC220-240V 50/60Hz
Luminous Flux: $\geq 8000\text{lm}$
CRI: ≥ 70
Beam Angle: 100°
Color Temperature: 6500K/4000K/3000K
Working Temperature: -10~50° C
Surface Treatment: Red/Yellow/Blue/Green
Life Span: 25000H
Material: Aluminium+PC
Product Size: $\Phi 434 \times 170\text{mm}$

LED NEW 20/30/60 W



MD-MLD0520

20W

Power: SMD 20W
Input Voltage: AC220-240V 50/60Hz
Luminous Flux: $\geq 1200\text{lm}$
CRI: ≥ 80
Beam Angle: 100°
Color Temperature: 6500K/4000K/3000K
Working Temperature: -10~50° C
Surface Treatment: Red/Yellow/Blue/Green
Life Span: 25000H
Material: Aluminium+PC
Product Size: $\Phi 215 \times 210\text{mm}$



MD-MLD0530

30W

Power: SMD 30W
Input Voltage: AC220-240V 50/60Hz
Luminous Flux: $\geq 1800\text{lm}$
CRI: ≥ 80
Beam Angle: 100°
Color Temperature: 6500K/4000K/3000K
Working Temperature: -10~50° C
Surface Treatment: Red/Yellow/Blue/Green
Life Span: 25000H
Material: Aluminium+PC
Product Size: $\Phi 265 \times 270\text{mm}$

MD-MLD0560

60W

Power: SMD 60W
Input Voltage: AC220-240V 50/60Hz
Luminous Flux: $\geq 3600\text{lm}$
CRI: ≥ 80
Beam Angle: 100°
Color Temperature: 6500K/4000K/3000K
Working Temperature: -10~50° C
Surface Treatment: Red/Yellow/Blue/Green
Life Span: 25000H
Material: Aluminium+PC



LED
High bay

LED
High bay



The hotel lobby and other public places such as shops, need to create a spectacular and gorgeous space effect. Not only in the Lord to ensure the environmental light quality but also need to make a good math on ambience and the lighting features, In order to create a elegant, comfortable and hospitality environment, stand out the personality and image of the hotel.



The office area is engaged in thinking and communication, reacting the office environment and the professional characteristics will affect the working mood and efficiency, lighting environment construction need to conform to the requirements of the person' s visual. Pay attention to the diversity of the illumination brightness and chromaticity, provide audiences with a spirited, cheerful fully office environment. At the same time energy saving and environmental protection, in order to reduce energy waste and environment worsening.



According to the apartments lighting have various multi-function environment places, must consider the delicate relationship between whole and the parts, not only need each have distinguishing feature, but also need the overall integration of comfort. using different lighting combinations to create a comfortable bedroom environment, fresh and clear study temperament .distinct corridor and romantic dining atmosphere.



Leisure clubs lighting is not only the perfect combine between the lighting basic elements and the environment, need pay more attention to the construction of environment atmosphere and style of shaping, through using the new elements of controlling the lighting color changes and lighting local strengthening to produce a quietly . warmly, luxurious, simple but elegant and so many other effects on the whole.



The environment of mall is the key to build commercail atmosphere need to Construct the various levels of lighting environment according to the different area function such as window area, exhibition area, new product area image area. fitting area and others places , Eventually reach the results into consumption. Through the outstanding feautres , interest of commedity and the comfortable shopping environment.



Outdoor landscape lighting contain the lighting for natural and buildings. The scope Include natural grass and trees, parks, building outline, the hotel, the music field, golf courses, home garden or park avenue, in each place which need to instal lighting to increase Aesthetics, To achieve a bright outdoor lighting at night. At the same time when use the light need to fully consider the use of energy consumption and environmental protection.

STEEL DRY CARGO 20 FEET CONTAINER

Outside size				
L	W	H		
20'-0"	8'-0"	8'-6"		
6.058 m	2.438 m	2.591 m		
Inside size				
L	W	H		
19'-4 13/16"	7'-8 19/32"	7'-9 57/64"		
5.898 m	2.352 m	2.385 m		
Limited weight			Container inner diameter	
Total Gross weight	Empty container weight	Cargo Net weight	W	H
52,910 lb	5,140 lb	47,770 lb	7'-8 1/8"	7'-5 3/4"
67,200 lb	5,290 lb	61,910 lb	2.343 m	2.280 m
24,000 Kg	2,330 Kg	21,670 Kg	volume(cubic meter)	volume(cubic feet)
30,480 Kg	2,400 Kg	28,080 Kg	33.1	1.169
Remark				
The above information is for reference only, actual size and weight should be according to the mark of the container.				

40 FEET STEEL DRY CARGO CONTAINER

Outside size				
L	W	H		
40'-0"	8'-0"	8'-6"		
12.192 m	2.438 m	2.591 m		
Inside size				
L	W	H		
39'-5 45/64"	7'-8 19/32"	7'-9 57/64"		
12.032 m	2.352 m	2.385 m		
Limited weight			Container inner diameter	
Total Gross weight	Empty container weight	Cargo Net weight	W	H
67,200 lb	8,820 lb	58,380 lb	7'-8 1/8"	7'-5 3/4"
			2.343 m	2.280 m
			volume(cubic meter)	volume(cubic feet)
30,480 Kg	4,000 Kg	26,480 Kg	67.5	2.385
Remark				
The above information is for reference only, actual size and weight should be according to the mark of the container.				

40 FEET HIGH STEEL DRY CARGO CONTAINER

Outside size				
L	W	H		
40'-0"	8'-0"	9'-6"		
12.192 m	2.438 m	2.896 m		
Inside size				
L	W	H		
39'-5 45/64"	7'-8 19/32"	8'-9 15/16"		
12.032 m	2.352 m	2.69 m		
Limited weight			Container inner diameter	
Total Gross weight	Empty container weight	Cargo Net weight	W	H
67,200 lb	9,260 lb	57,940 lb	7'-8 1/8"	8'-5 49/64"
			2.343 m	2.585 m
			volume(cubic meter)	volume(cubic feet)
30,480 Kg	4,200 Kg	26,280 Kg	76.2	2,690
Remark				
The above information is for reference only, actual size and weight should be according to the mark of the container.				

